

# Roller Shades Specification Catalog



**HunterDouglasHospitality**

Hunter Douglas Hospitality  
Roller Shades provide an excellent  
solution for controlling light and  
glare. Simple, versatile, distinctive,  
and cost-effective, our line includes  
a wide range of decorative and  
performance fabrics, mounted on  
high-quality hardware.

- 1 | MANUAL ROLLER SHADES
- 2 | MOTORIZED ROLLER SHADES
- 3 | DEDUCTION CHARTS





Inside Cover: Hessie Noord Natie Office, Antwerp, Belgium  
Architect: Conix Architecten  
Product: Roller Shades

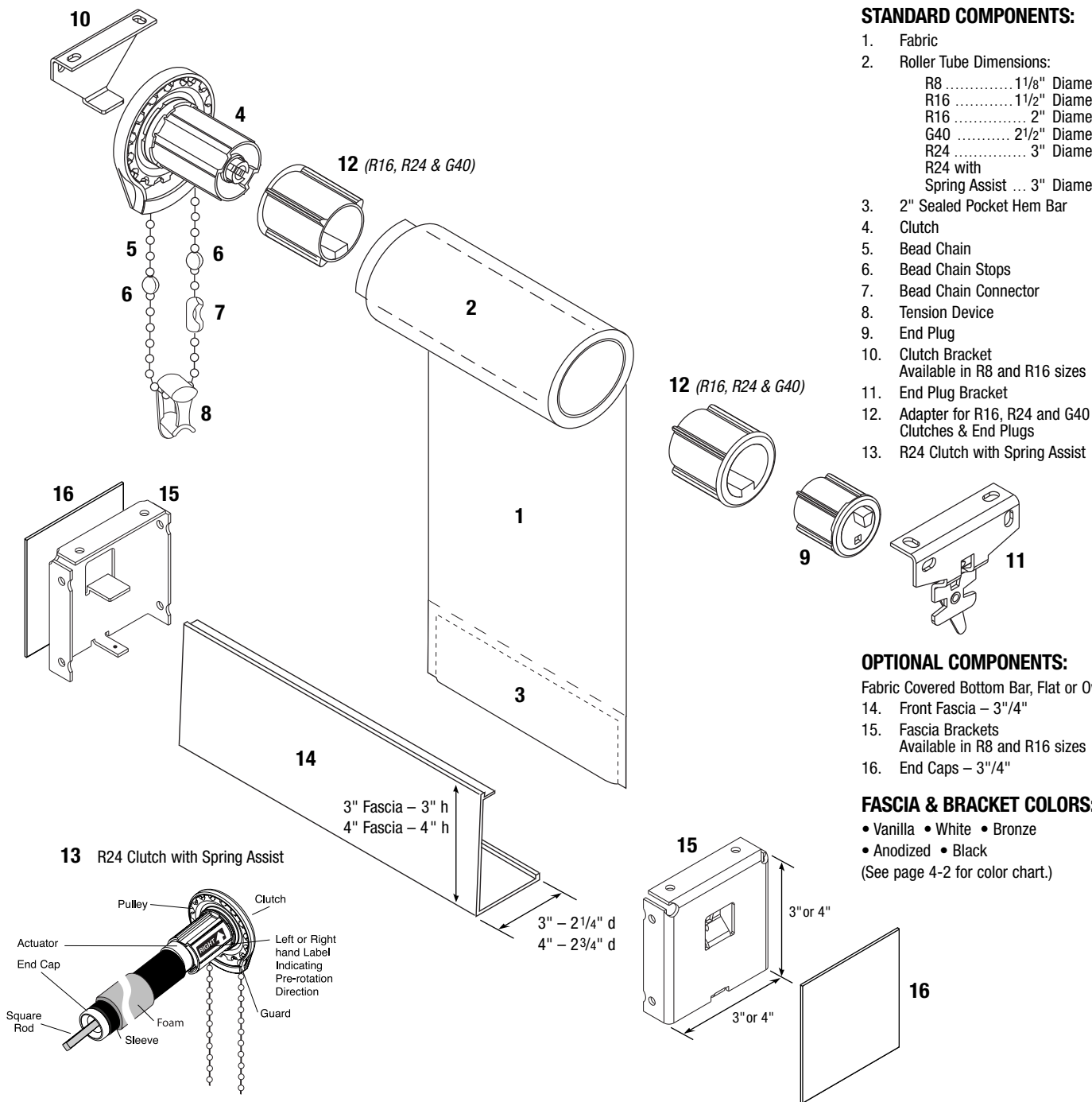
Front Cover: Intercontinental Hotel, Dubai, United Arab Emirates  
Architect/Specifier: Depa Interiors  
Product: Motorized Roller Shades

# Manual Roller Shades





— MANUAL ROLLER SHADE —



**STANDARD COMPONENTS:**

1. Fabric
2. Roller Tube Dimensions:
  - R8 ..... 1 1/8" Diameter
  - R16 ..... 1 1/2" Diameter
  - R16 ..... 2" Diameter
  - G40 ..... 2 1/2" Diameter
  - R24 ..... 3" Diameter
  - R24 with Spring Assist ... 3" Diameter
3. 2" Sealed Pocket Hem Bar
4. Clutch
5. Bead Chain
6. Bead Chain Stops
7. Bead Chain Connector
8. Tension Device
9. End Plug
10. Clutch Bracket  
Available in R8 and R16 sizes
11. End Plug Bracket
12. Adapter for R16, R24 and G40 Clutches & End Plugs
13. R24 Clutch with Spring Assist

**OPTIONAL COMPONENTS:**

- Fabric Covered Bottom Bar, Flat or Oval
14. Front Fascia – 3"/4"
  15. Fascia Brackets  
Available in R8 and R16 sizes
  16. End Caps – 3"/4"

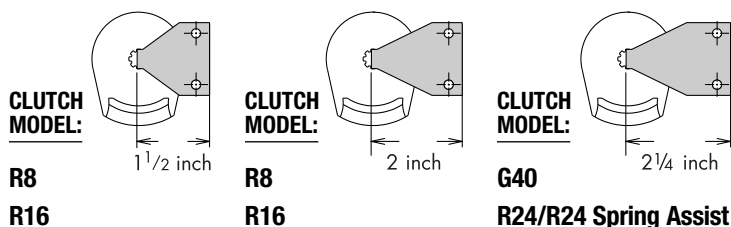
**FASCIA & BRACKET COLORS:**

- Vanilla • White • Bronze
  - Anodized • Black
- (See page 4-2 for color chart.)

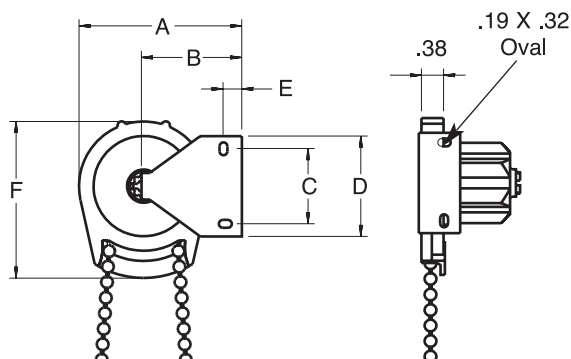
**SHADE SIZES & WEIGHTS:**

CLUTCH MODEL	SHADE WIDTH	SHADE DROP	MAXIMUM WEIGHT
<b>R8</b>	12" – 72"	12" – 144"	8 lbs.
<b>R16</b>	72 1/8" – 120"	12" – 144"	16 lbs.
<b>G40</b>	120 1/8" – 156"	12" – 144"	40 lbs.
<b>R24/R24 with Spring Assist</b>	156 1/8" – 192"	12" – 144"	40 lbs.

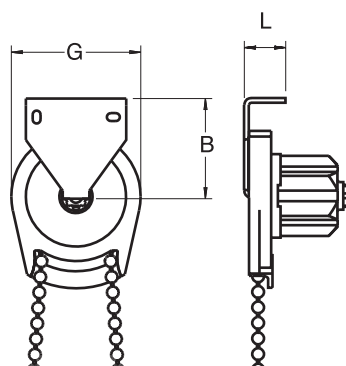
**BRACKET PROJECTIONS:**



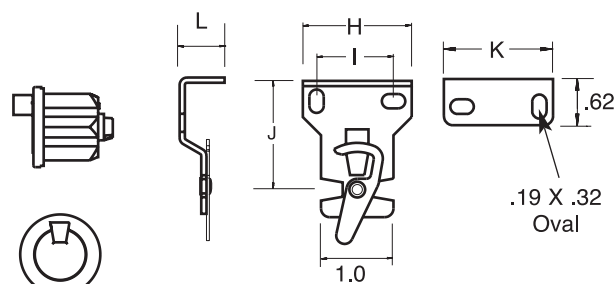
**— COMPONENT DIMENSIONS —**



**Outside & Inside Mount**



**Ceiling Mount**



**End Plug and Bracket with Retainer**

Flange diameter matches outside diameter of tube

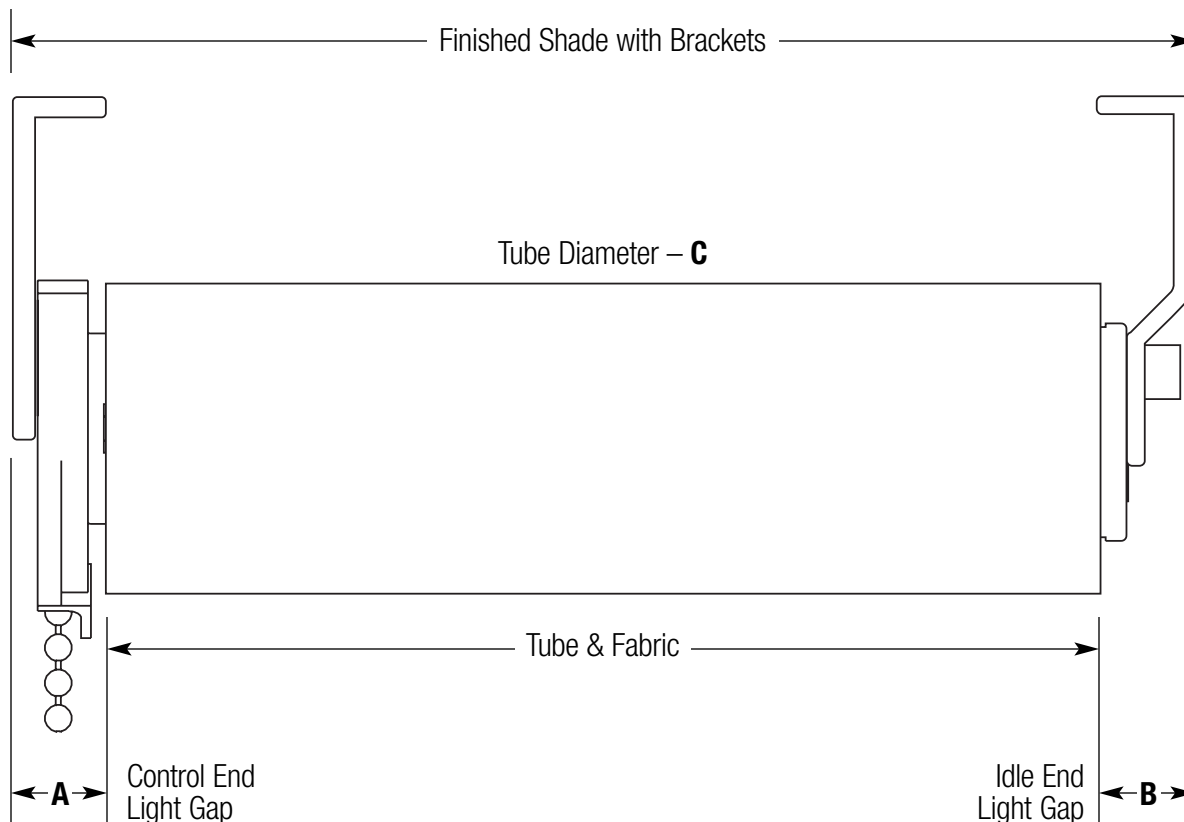
**COMPONENT DIMENSIONS:**

CLUTCH MODEL	BRACKET MODEL	A	B	C	D	E	F	G	H	I	J	K	L
<b>R8</b>	<b>1 1/2" Projection</b>	2.48"	1.5"	1.06"	1.5"	0.28"	2.35"	1.95"	1.5"	1.125"	1.5"	1.5"	.62"
	<b>2" Projection</b>	2.98"	2.0"	1.06"	1.5"	0.28"	2.35"	1.95"	1.5"	1.125"	2.0"	1.5"	.62"
<b>R16</b>	<b>1 1/2" Projection</b>	2.95"	1.62"	2.0"	2.5"	0.31"	3.21"	2.65"	2.5"	2.0"	1.5"	2.5"	.62"
	<b>2" Projection</b>	3.45"	2.12"	2.0"	2.5"	0.31"	3.21"	2.65"	2.5"	2.0"	2.0"	2.5"	.62"
<b>G40*</b>	<b>2 1/4" Projection</b>	4.0"	2.25"	1.75"	3.0"	0.375"	4.25"	3.50"	3.0"	1.75"	2.25"	3.0"	.62"
<b>R24/R24 WITH SPRING ASSIST</b>	<b>2 1/4" Projection</b>	4.0"	2.25"	1.75"	3.0"	0.375"	4.25"	3.50"	3.0"	1.75"	2.25"	3.0"	.62"

\* Requires more chain length due to greater gear ratio

— SINGLE SHADE MOUNTING —

(Deductions will be taken by manufacturer. Please order desired width.)

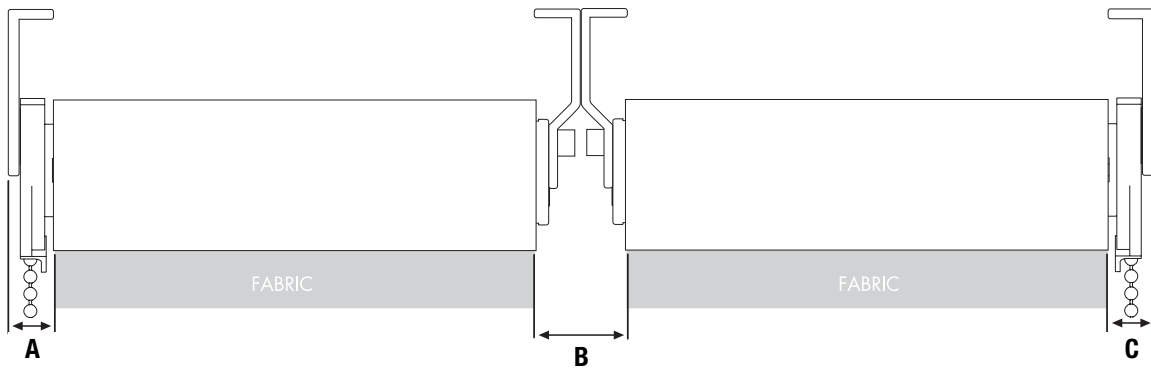


**SINGLE SHADE MOUNTING DIMENSIONS:**

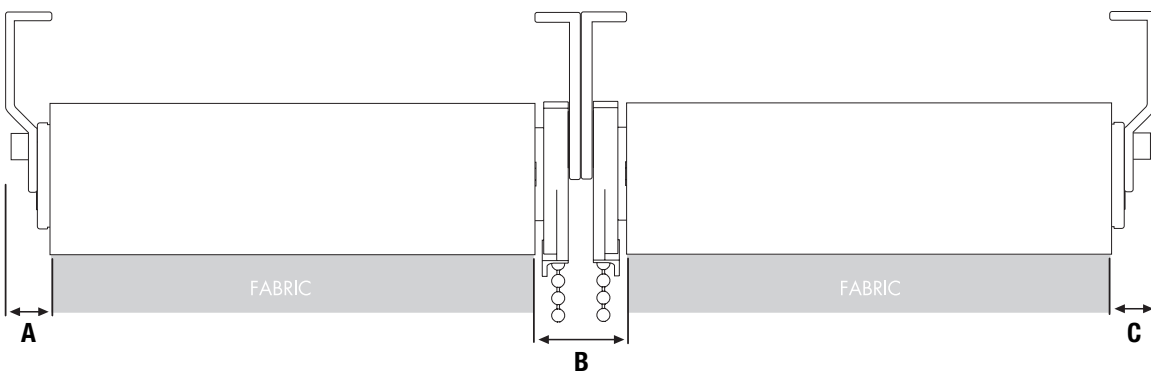
CLUTCH MODEL	CONTROL END LIGHT GAP A	IDLE END LIGHT GAP B	TUBE DIAMETER C
<b>R8</b>	.510"	.573"	1 1/8"
<b>R16</b>	.635"	.573"	1 1/2" / 2"
<b>G40</b>	7/8"	5/8"	2 1/2"
<b>R24/R24</b> with Spring Assist	7/8"	5/8"	3"

— SIDE-BY-SIDE MOUNTING —

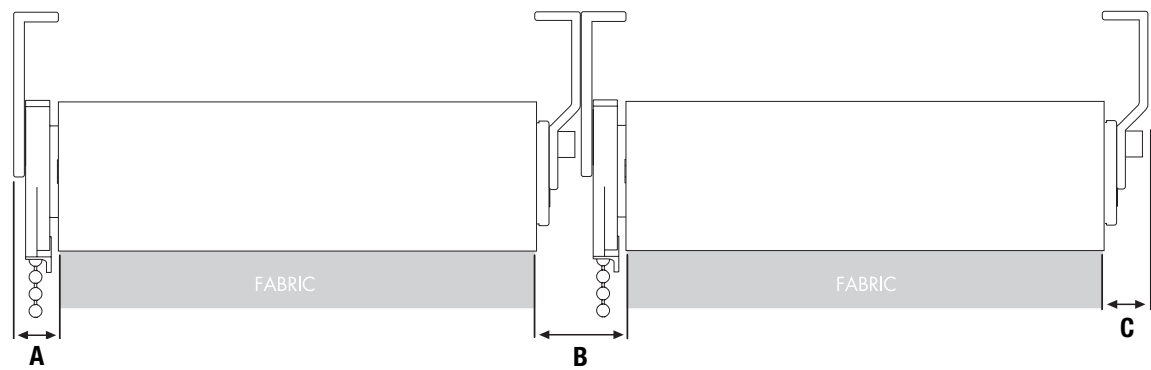
LEFT AND RIGHT CLUTCHES



RIGHT AND LEFT CLUTCHES



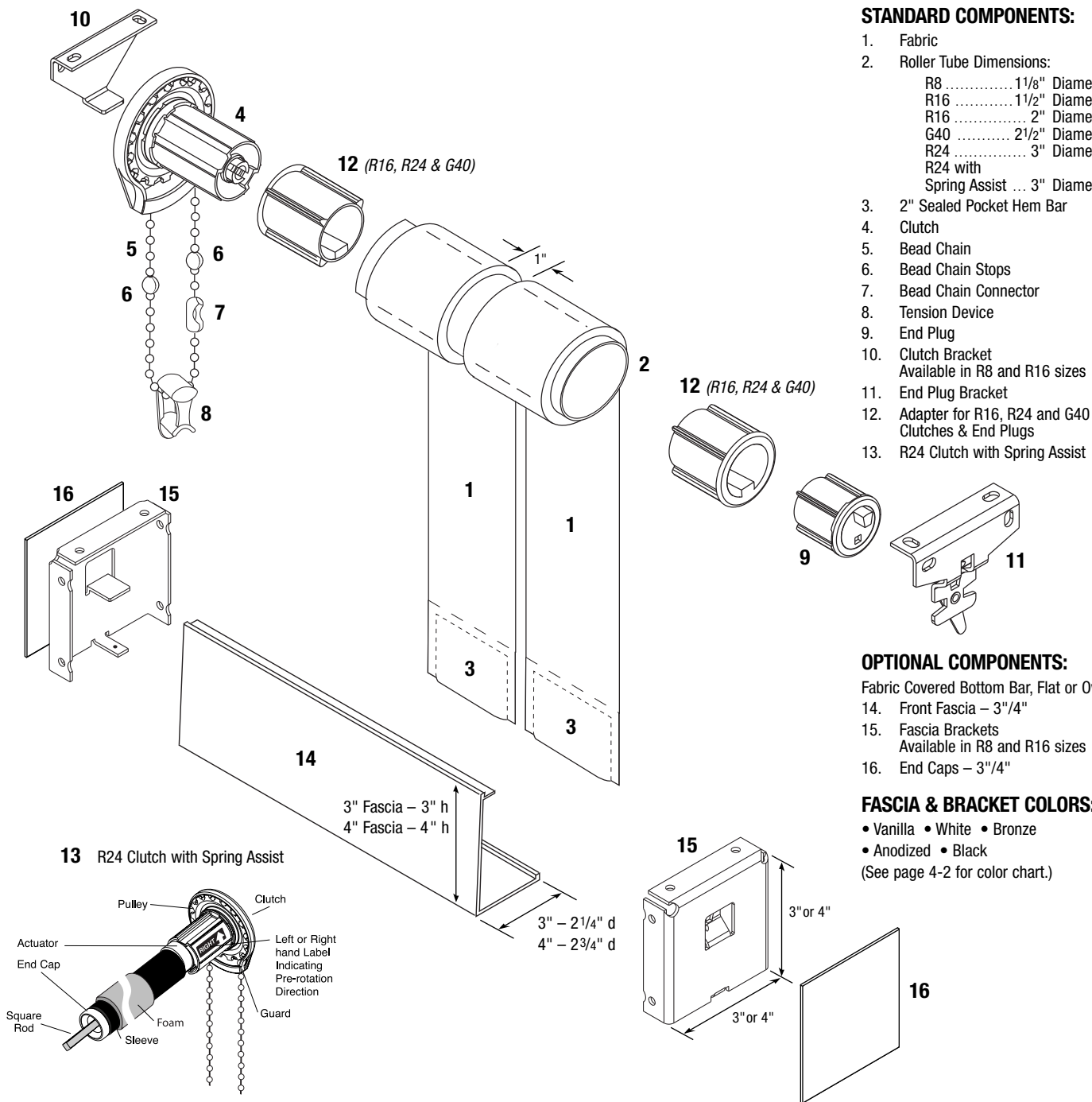
LEFT CLUTCHES



**SIDE-BY-SIDE GAP DIMENSIONS:**

CLUTCH MODEL	LEFT & RIGHT CLUTCHES			RIGHT & LEFT CLUTCHES			LEFT CLUTCHES		
	A	B	C	A	B	C	A	B	C
<b>R8</b>	1/2"	1 1/8"	1/2"	9/16"	1"	9/16"	1/2"	1 1/16"	9/16"
<b>R16</b>	5/8"	1 1/8"	5/8"	9/16"	1 1/4"	9/16"	5/8"	1 3/16"	9/16"
<b>G40</b>	7/8"	1 1/4"	7/8"	5/8"	1 3/4"	5/8"	5/8"	1 1/2"	5/8"
<b>R24/R24</b> with Spring Assist	7/8"	1 1/4"	7/8"	5/8"	1 3/4"	5/8"	5/8"	1 1/2"	5/8"

— MANUAL BANDED ROLLER SHADE —



**STANDARD COMPONENTS:**

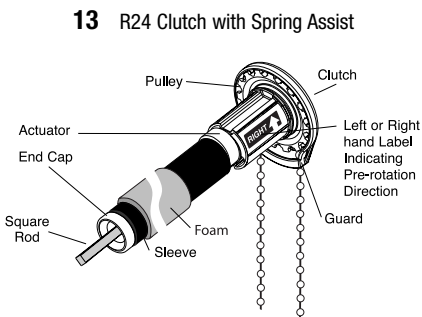
1. Fabric
2. Roller Tube Dimensions:
  - R8 ..... 1 1/8" Diameter
  - R16 ..... 1 1/2" Diameter
  - R16 ..... 2" Diameter
  - G40 ..... 2 1/2" Diameter
  - R24 ..... 3" Diameter
  - R24 with Spring Assist ... 3" Diameter
3. 2" Sealed Pocket Hem Bar
4. Clutch
5. Bead Chain
6. Bead Chain Stops
7. Bead Chain Connector
8. Tension Device
9. End Plug
10. Clutch Bracket  
Available in R8 and R16 sizes
11. End Plug Bracket
12. Adapter for R16, R24 and G40 Clutches & End Plugs
13. R24 Clutch with Spring Assist

**OPTIONAL COMPONENTS:**

- Fabric Covered Bottom Bar, Flat or Oval
14. Front Fascia – 3"/4"
  15. Fascia Brackets  
Available in R8 and R16 sizes
  16. End Caps – 3"/4"

**FASCIA & BRACKET COLORS:**

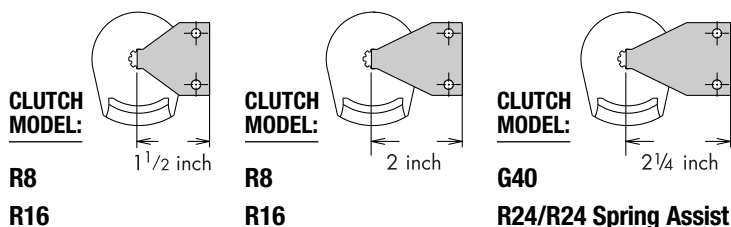
- Vanilla • White • Bronze
  - Anodized • Black
- (See page 4-2 for color chart.)



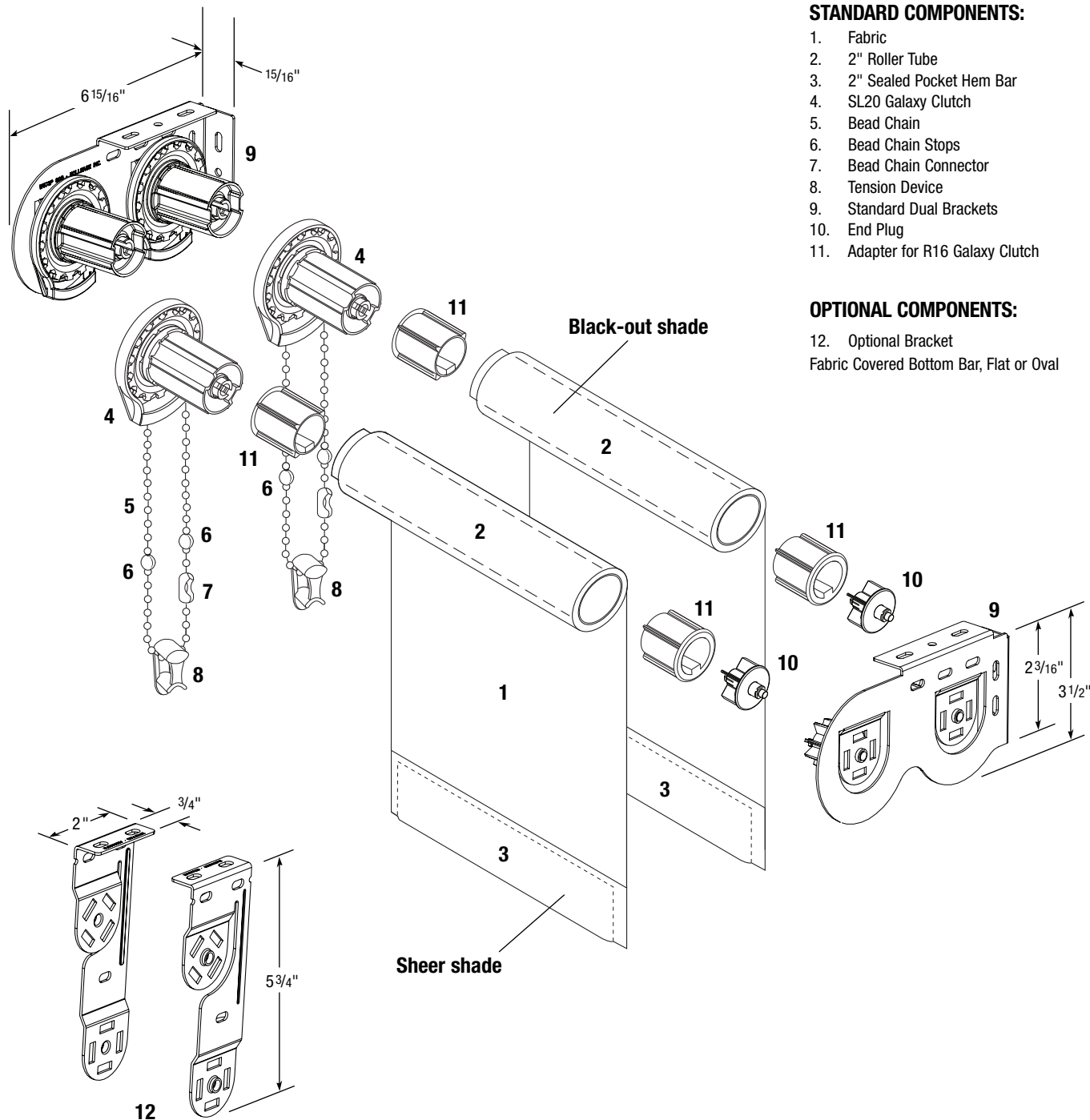
**SHADE SIZES & WEIGHTS:**

CLUTCH MODEL	SHADE WIDTH	SHADE DROP	MAXIMUM WEIGHT
<b>R8</b>	12" – 72"	12" – 144"	8 lbs.
<b>R16</b>	72 1/8" – 120"	12" – 144"	16 lbs.
<b>G40</b>	120 1/8" – 156"	12" – 144"	40 lbs.
<b>R24/R24 with Spring Assist</b>	156 1/8" – 192"	12" – 144"	40 lbs.

**BRACKET PROJECTIONS:**



— DUAL MANUAL ROLLER SHADES —



**STANDARD COMPONENTS:**

1. Fabric
2. 2" Roller Tube
3. 2" Sealed Pocket Hem Bar
4. SL20 Galaxy Clutch
5. Bead Chain
6. Bead Chain Stops
7. Bead Chain Connector
8. Tension Device
9. Standard Dual Brackets
10. End Plug
11. Adapter for R16 Galaxy Clutch

**OPTIONAL COMPONENTS:**

12. Optional Bracket  
Fabric Covered Bottom Bar, Flat or Oval

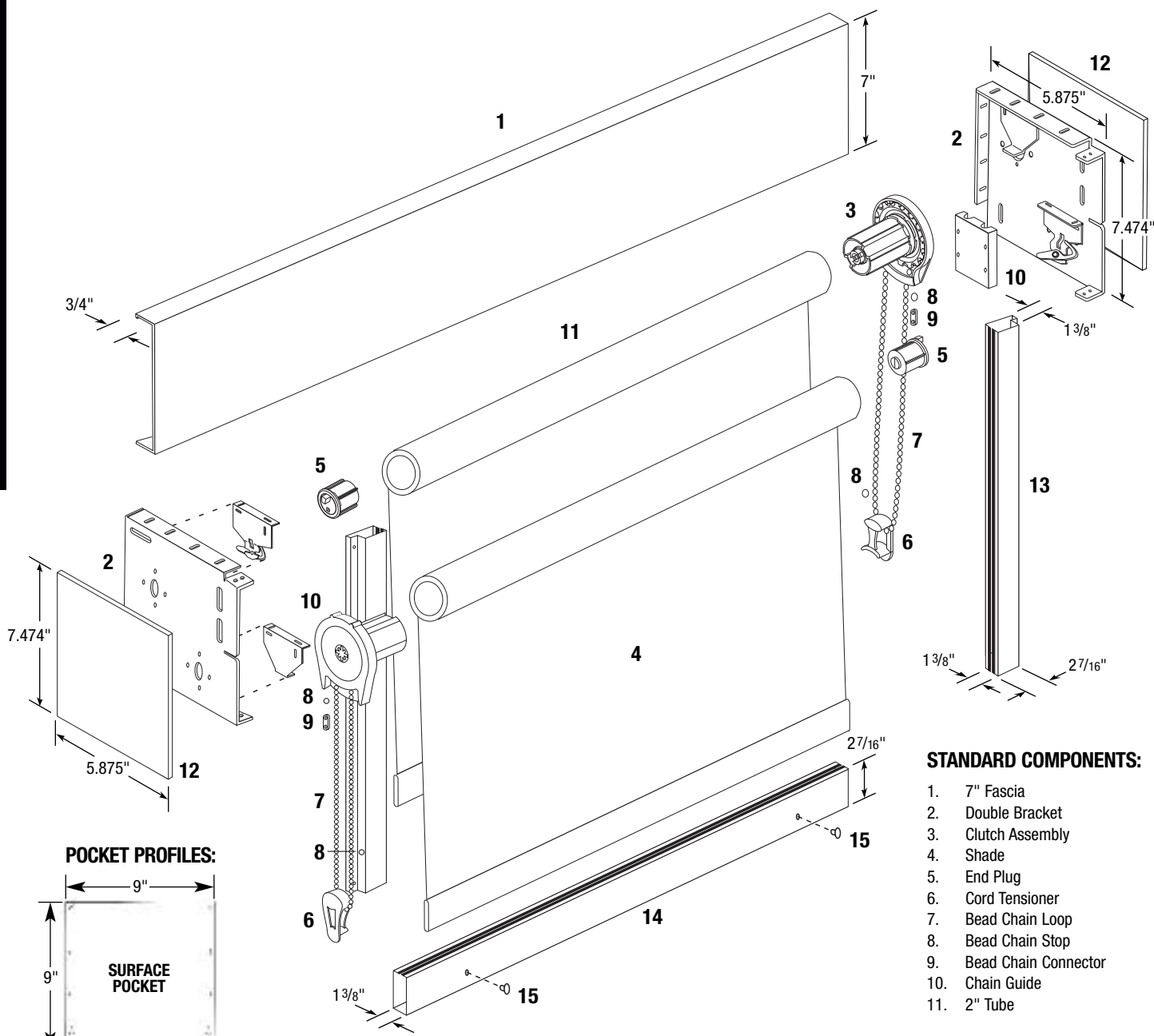
**SHADE SIZES & WEIGHTS:**

CLUTCH MODEL	SHADE WIDTH	SHADE DROP	MAXIMUM WEIGHT	TUBE SIZE	MAXIMUM ROLL-UP DIAMETER*
SL20 Galaxy	18" – 120"	12" – 120"	16 lbs.	2"	3.4"

\* Roll-up diameter varies with the thickness of the fabric. Contact Hunter Douglas Contract if specific roll-up diameter information is required.

NOTE: Recommended for inside mount applications only.

— DUAL MANUAL SHADES WITH FASCIA —



**STANDARD COMPONENTS:**

1. 7" Fascia
2. Double Bracket
3. Clutch Assembly
4. Shade
5. End Plug
6. Cord Tensioner
7. Bead Chain Loop
8. Bead Chain Stop
9. Bead Chain Connector
10. Chain Guide
11. 2" Tube

**FASCIA & BRACKET COLORS:**

- Vanilla • White • Bronze
  - Anodized • Black
- (See page 4-2 for color chart.)

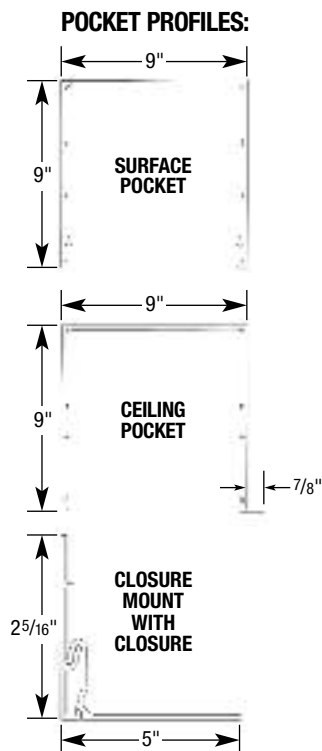
**OPTIONAL COMPONENTS:**

12. Fascia End Plate
  13. Blockout Side Channel
  14. Blockout Bottom Channel
  15. Mounting Hole Plugs
- Fabric Covered Bottom Bar, Flat or Oval

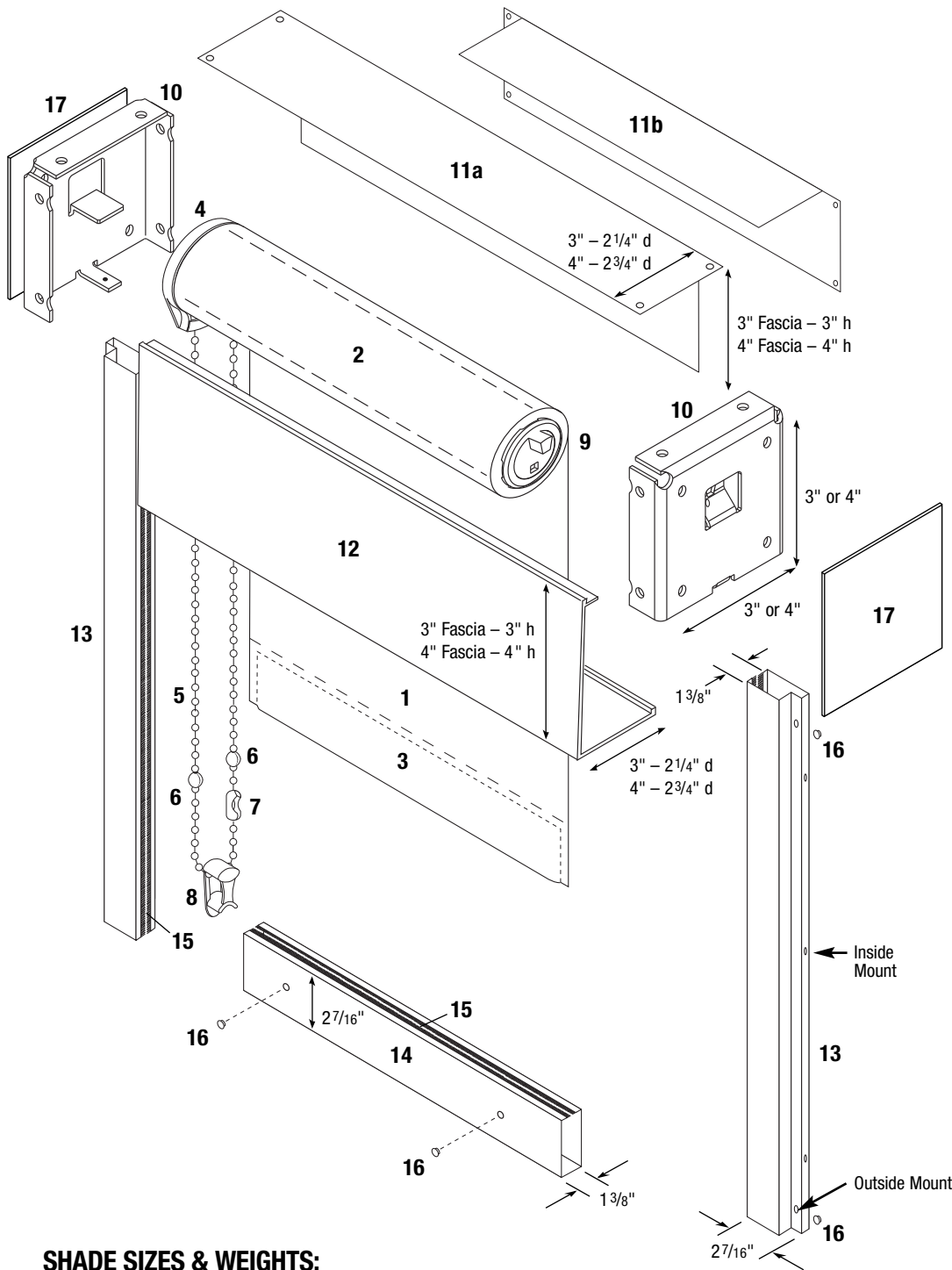
**SHADE SIZES & WEIGHTS:**

CLUTCH MODEL	SHADE WIDTH	SHADE DROP	MAXIMUM WEIGHT	TUBE SIZE	MAXIMUM ROLL-UP DIAMETER*
<b>R16</b>	18" – 120"	12" – 120"	16 lbs.	2"	3.5"
<b>G24 Fabric</b> < 10 oz/sq. yd	120 1/8" – 156"	12" – 120"	24 lbs.	2.5"	3.5"

\* Roll-up diameter varies with the thickness of the fabric. Contact Hunter Douglas Contract if specific roll-up diameter information is required.



# — MANUAL SHADE WITH BLOCKOUT SYSTEM —



### STANDARD COMPONENTS:

1. Fabric
2. Roller Tube Dimensions:
  - R8 ..... 1 1/8" Diameter
  - R16 ..... 1 1/2" Diameter
  - R16 ..... 2" Diameter
  - G40 ..... 2 1/2" Diameter
  - R24 ..... 3" Diameter
3. 2" Sealed Pocket Hem Bar
4. Clutch
5. Bead Chain
6. Bead Chain Stops
7. Bead Chain Connector
8. Tension Device
9. End Plug
10. 3" / 4" Fascia Brackets
  - R8 ..... 1 1/8" Diameter
  - R16 ..... 1 1/2" Diameter
- 11a. Top/Back Fascia (OM)
  - 3" Dimensions: 3" h x 2 1/4" d
  - 4" Dimensions: 4" h x 2 3/4" d
- 11b. Top/Back Fascia (IM)
  - 3" Dimensions: 2 1/4" h x 3" d
  - 4" Dimensions: 2 3/4" h x 4" d
12. Front Fascia
  - 3" Dimensions: 3" h x 2 1/4" d
  - 4" Dimensions: 4" h x 2 3/4" d
13. Side Channels
  - Dimensions: 27/16" w x 1 3/8" d
14. Bottom Channel
  - Dimensions: 27/16" h x 1 3/8" d
15. Wool Pile
16. Mounting Hole Plugs (outside mount only)

### OPTIONAL COMPONENTS:

17. End Caps – 3" / 4"
- Fabric Covered Bottom Bar, Flat

### FASCIA & BRACKET COLORS:

- Vanilla • White • Bronze
  - Anodized • Black
- (See page 4-2 for color chart.)

### SHADE SIZES & WEIGHTS:

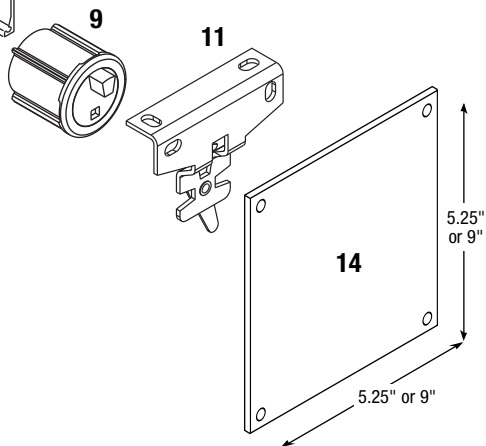
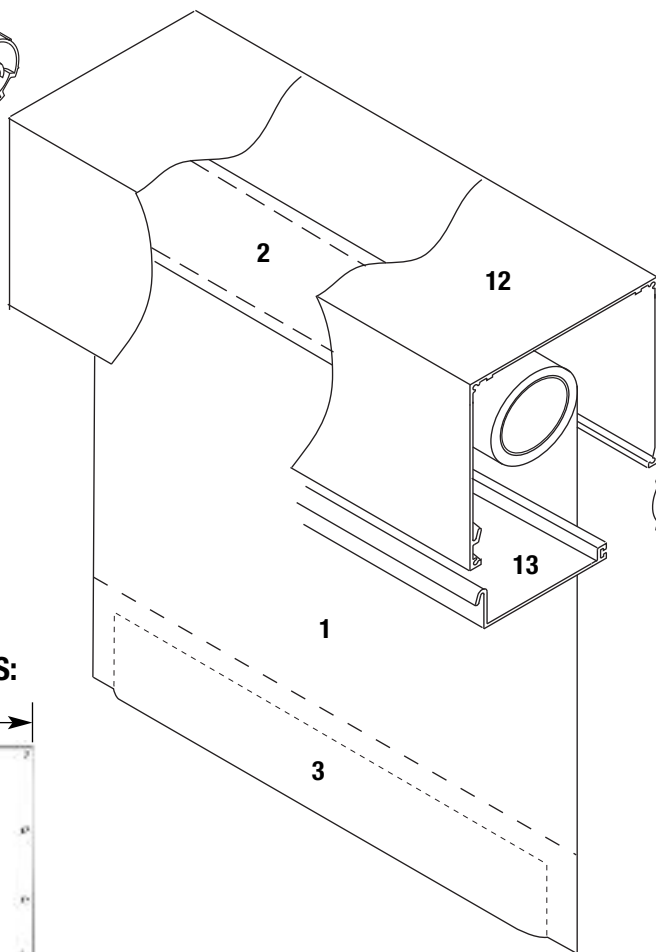
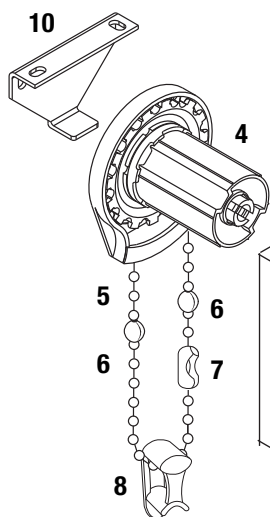
CLUTCH MODEL	SHADE WIDTH	SHADE DROP	MAXIMUM WEIGHT	TUBE SIZE 3" FASCIA	TUBE SIZE 4" FASCIA	MAXIMUM ROLL-UP DIAMETER* 3" FASCIA	MAXIMUM ROLL-UP DIAMETER* 4" FASCIA
R8	12" – 72"	12" – 144"	8 lbs.	1 1/8"	—	27/8"	—
R16	72 1/8" – 90"	12" – 144"	16 lbs.	1 1/2"	1 1/2"	27/8"	37/8"
R16	90 1/8" – 120"	12" – 144"	16 lbs.	—	2"	—	37/8"
G40	120 1/8" – 156"	12" – 144"	40 lbs.	—	2 1/2"	—	37/8"
R24	156 1/8" – 192"	12" – 144"	24 lbs.	—	3"	—	37/8"
R24 with Spring Assist	156 1/8" – 192"	12" – 144"	40 lbs.	—	3"	—	37/8"

\* Roll-up diameter varies with the thickness of the fabric and tube diameter. Contact Hunter Douglas Contract if specific roll-up diameter information is required.

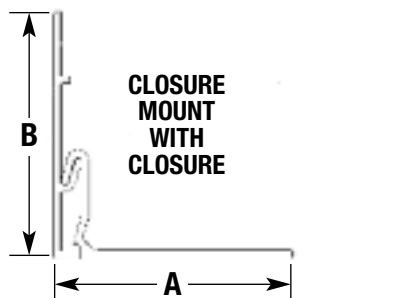
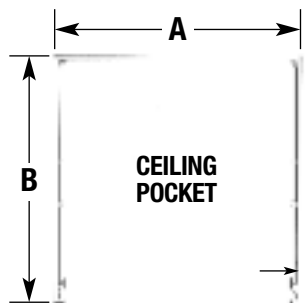
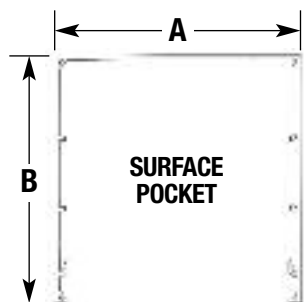
— MANUAL SHADE WITH EXTRUDED POCKET —

**STANDARD COMPONENTS:**

1. Fabric
2. 2" Roller Tube
3. 2" Sealed Pocket Hem Bar
4. Clutch
5. Bead Chain
6. Bead Chain Stops
7. Bead Chain Connector
8. Tension Device
9. End Plug
10. Clutch Bracket
11. End Plug Bracket
12. Extruded Pocket
13. Pocket Bottom Closure
14. Pocket End Plate



**POCKET PROFILES:**



**OPTIONAL COMPONENTS:**

- Fabric Covered Bottom Bar
- Flat or Oval

**EXTRUDED POCKET COLORS:**

- White • Anodized
- (See page 4-2 for color chart.)

**POCKET DIMENSIONS:**

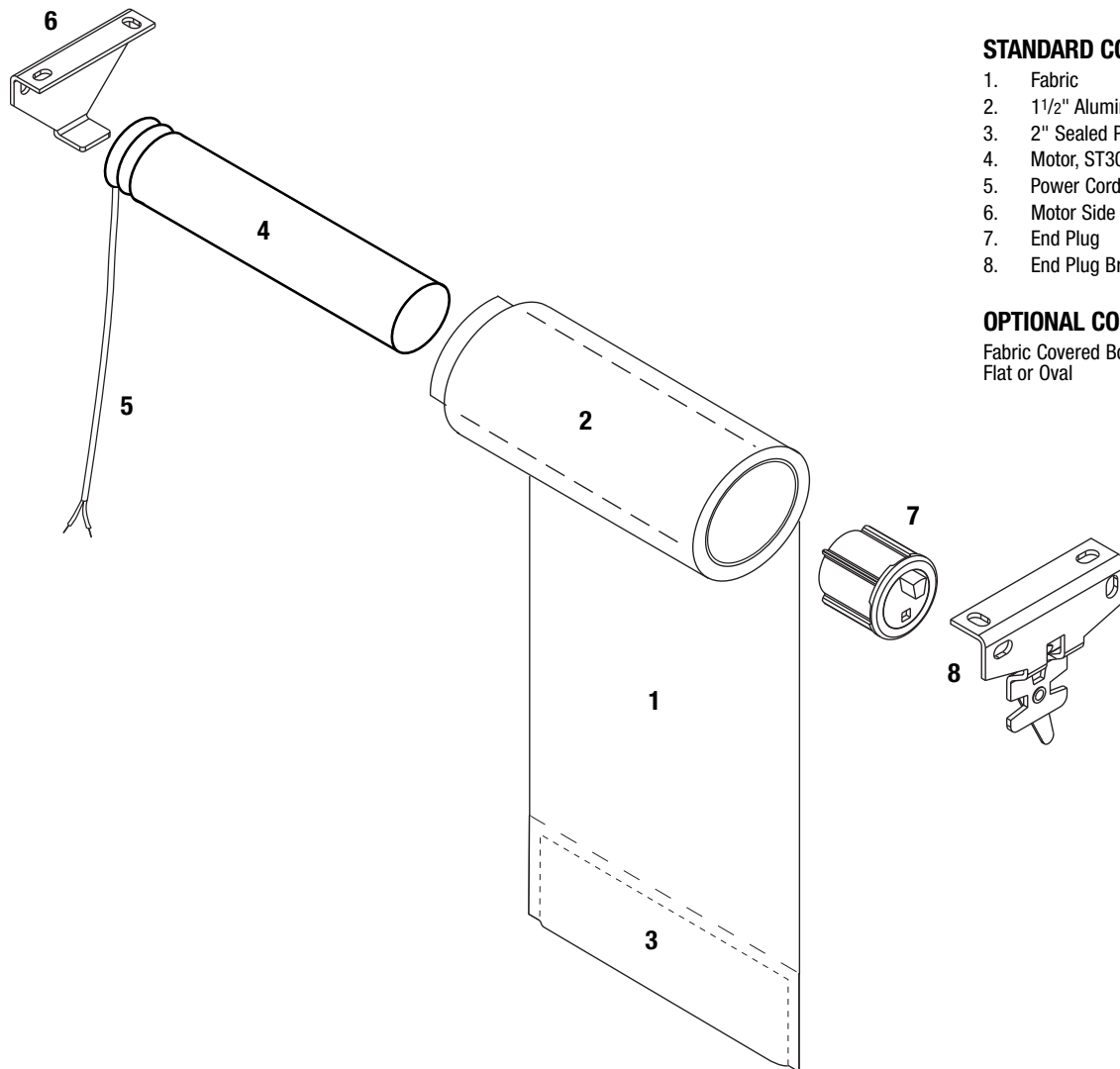
POCKET SIZE	WIDTH A	HEIGHT B
Surface Pocket	5 1/4"	5 1/4"
	9"	9"
Ceiling Pocket	5 1/4"	5 1/4"
	9"	9"
Closure Mount (B) with 2" Closure (A)	2"	2 5/16"
Closure Mount (B) with 3" Closure (A)	3"	2 5/16"
Closure Mount (B) with 5" Closure (A)	5"	2 5/16"

# Motorized Roller Shades

MOTORIZED ROLLER SHADES



— MOTORIZED ROLLER SHADE —  
ST30 DC MOTOR (RTS)



**STANDARD COMPONENTS:**

1. Fabric
2. 1 1/2" Aluminum Roller Tube
3. 2" Sealed Pocket Hem Bar
4. Motor, ST30
5. Power Cord
6. Motor Side Bracket
7. End Plug
8. End Plug Bracket

**OPTIONAL COMPONENTS:**

Fabric Covered Bottom Bar,  
Flat or Oval

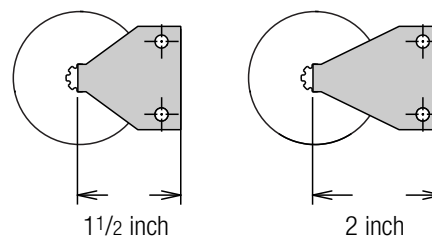
**TRANSFORMER DIMENSIONS:**

MOTOR MODEL	OUTPUT	INPUT	HEIGHT	LENGTH	WIDTH
ST30	24V-1.125A	AC 100-240V ~ 50/60Hz 0.7A	1.25"	3.75"	2.0"
ST30	24V-10A	AC 100-240V ~ 50/60Hz 3.5A	4.0"	4.9375"	4.9375"
ST30	24V-5A (On Switch)	AC 100-120V ~ 50/60Hz 3.3A	4.0"	4.9375"	2.5625"
		AC 200-240V ~ 50/60Hz 2.0A	4.0"	4.9375"	2.5625"

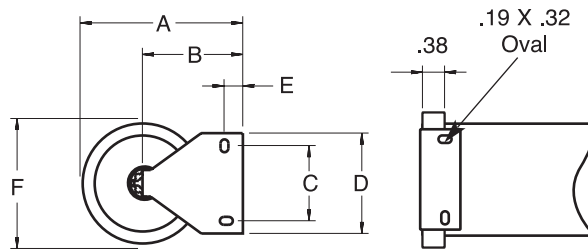
**SHADE SIZES & WEIGHTS:**

MOTOR MODEL	SHADE WIDTH	SHADE DROP	MAXIMUM WEIGHT
ST30	20" – 72"	12" – 96"	12 lbs.

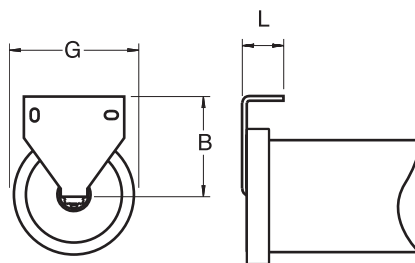
**BRACKET PROJECTIONS:**



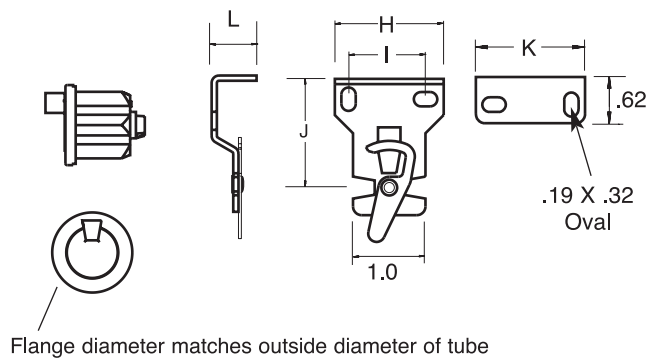
**— COMPONENT DIMENSIONS —**



**Outside & Inside Mount**



**Ceiling Mount**



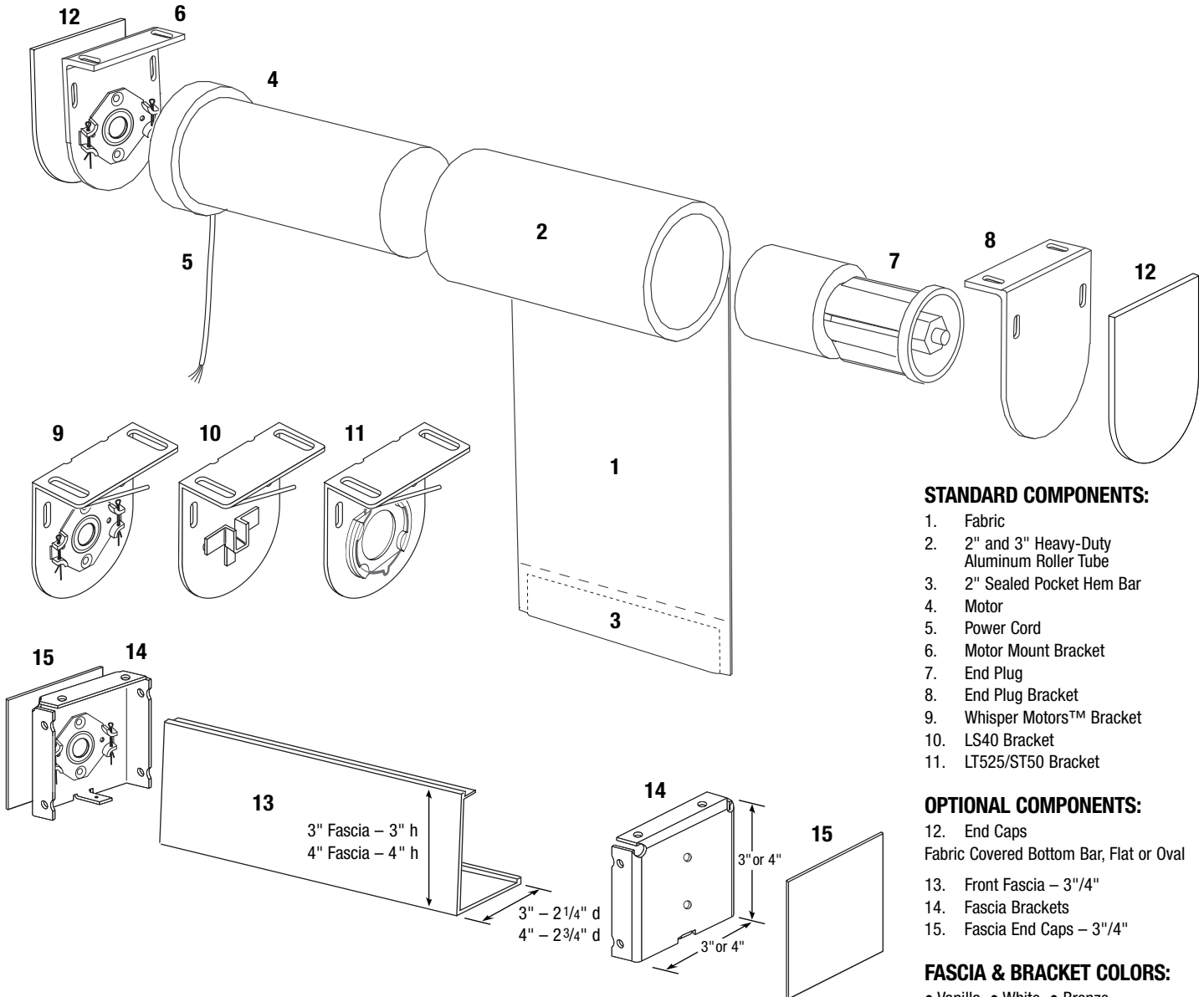
**End Plug and Bracket with Retainer**

**COMPONENT DIMENSIONS:**

MOTOR MODEL	BRACKET MODEL	A	B	C	D	E	F	G	H	I	J	K	L
ST30	1 1/2" Projection	2.48"	1.5"	1.06"	1.5"	0.28"	1.95"	1.95"	1.5"	1.125"	1.5"	1.5"	0.62"

— MOTORIZED ROLLER SHADE —

ST50 MOTOR (RTS) / ST50 MOTOR (STANDARD) / LS40 MOTOR (STANDARD) /  
 LT525 MOTOR (RTS) / LT525 MOTOR (STANDARD) /  
 WHISPER MOTORS™ HDC 100S (STANDARD) / WHISPER MOTORS™ HDC 200S (STANDARD)



**STANDARD COMPONENTS:**

1. Fabric
2. 2" and 3" Heavy-Duty Aluminum Roller Tube
3. 2" Sealed Pocket Hem Bar
4. Motor
5. Power Cord
6. Motor Mount Bracket
7. End Plug
8. End Plug Bracket
9. Whisper Motors™ Bracket
10. LS40 Bracket
11. LT525/ST50 Bracket

**OPTIONAL COMPONENTS:**

12. End Caps
- Fabric Covered Bottom Bar, Flat or Oval
13. Front Fascia – 3"/4"
14. Fascia Brackets
15. Fascia End Caps – 3"/4"

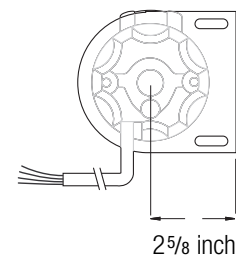
**FASCIA & BRACKET COLORS:**

- Vanilla • White • Bronze
  - Anodized • Black
- (See page 4-2 for color chart.)

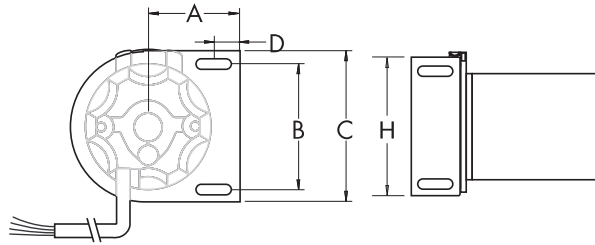
**SHADE SIZES & WEIGHTS:**

MOTOR MODEL	RPMs	SHADE WIDTH	SHADE DROP	MAXIMUM WEIGHT
ST50 RTS	30 rpm	45" – 156"	12" – 192"	24 lbs.
ST50 Std	30 rpm	45" – 156"	12" – 192"	24 lbs.
LS40 Std	30 rpm	26" – 44 <sup>7</sup> / <sub>8</sub> "	12" – 192"	20 lbs.
LT525 RTS	20 rpm	156 <sup>1</sup> / <sub>8</sub> " – 192"	12" – 192"	35 lbs.
LT525 Std	20 rpm	156 <sup>1</sup> / <sub>8</sub> " – 192"	12" – 192"	35 lbs.
Whisper HDC 100S	28 rpm	27" – 156"	12" – 192"	30 lbs.
Whisper HDC 200S	28 rpm	156 <sup>1</sup> / <sub>8</sub> " – 192"	12" – 192"	30 lbs.

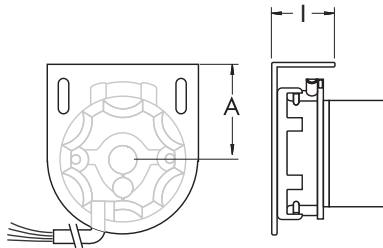
**BRACKET PROJECTIONS:**



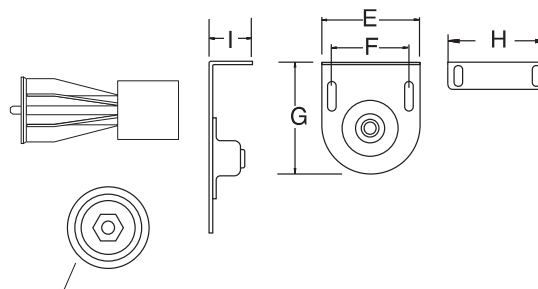
**— COMPONENT DIMENSIONS —**



**Outside & Inside Mount**



**Ceiling Mount**



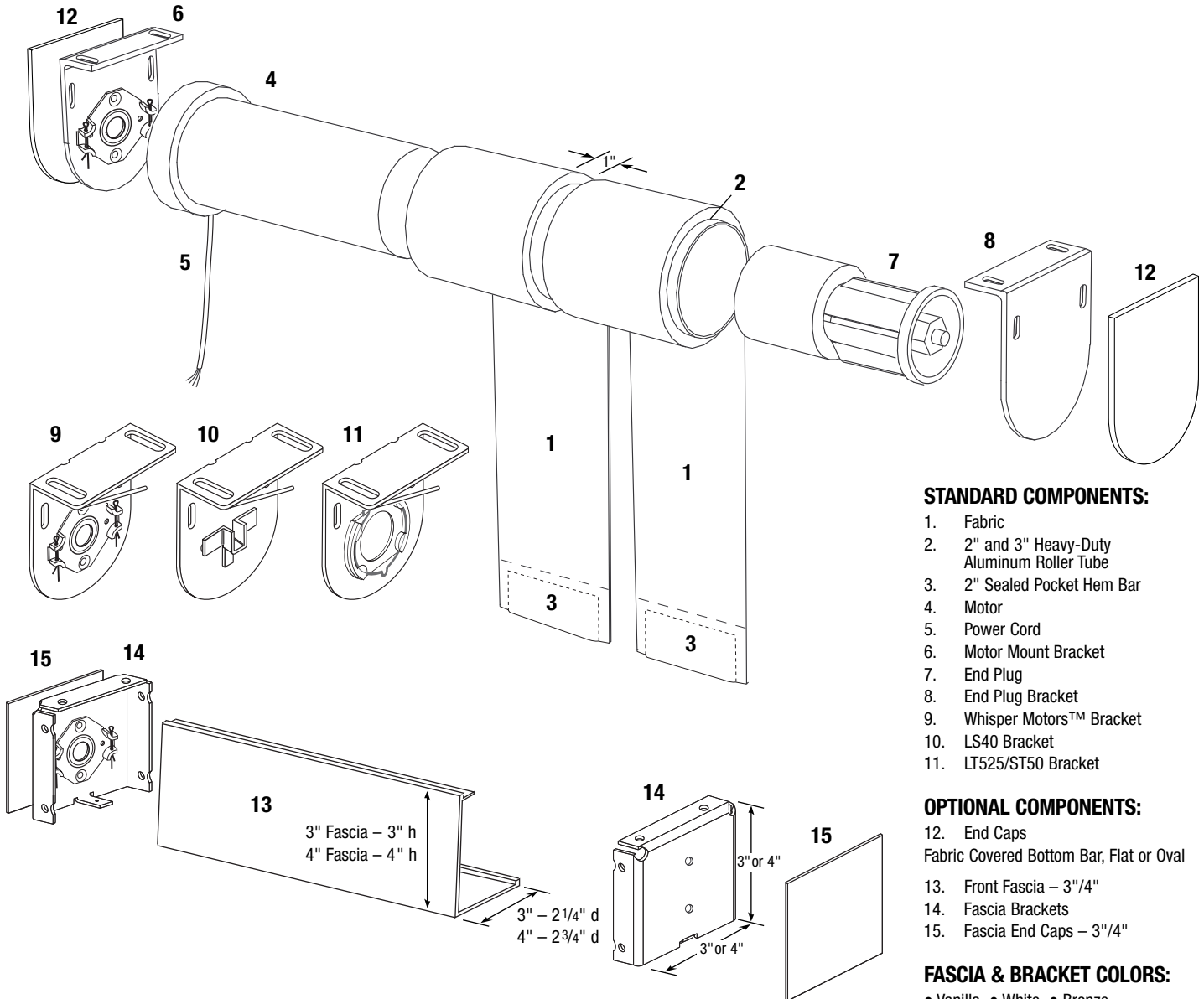
**End Plug and Bracket with Retainer**

**COMPONENT DIMENSIONS:**

MOTOR MODEL	BRACKET MODEL	A	B	C	D	E	F	G	H	I
ST50 RTS	2 <sup>5</sup> / <sub>8</sub> " Projection	2 <sup>5</sup> / <sub>8</sub> "	2 <sup>1</sup> / <sub>2</sub> "	3 <sup>1</sup> / <sub>4</sub> "	7/ <sub>8</sub> "	3 <sup>1</sup> / <sub>4</sub> "	2 <sup>1</sup> / <sub>2</sub> "	4 <sup>1</sup> / <sub>4</sub> "	3 <sup>1</sup> / <sub>4</sub> "	1 <sup>5</sup> / <sub>8</sub> "
ST50 Std	2 <sup>5</sup> / <sub>8</sub> " Projection	2 <sup>5</sup> / <sub>8</sub> "	2 <sup>1</sup> / <sub>2</sub> "	3 <sup>1</sup> / <sub>4</sub> "	7/ <sub>8</sub> "	3 <sup>1</sup> / <sub>4</sub> "	2 <sup>1</sup> / <sub>2</sub> "	4 <sup>1</sup> / <sub>4</sub> "	3 <sup>1</sup> / <sub>4</sub> "	1 <sup>5</sup> / <sub>8</sub> "
LS40 Std	2 <sup>1</sup> / <sub>8</sub> " Projection	2 <sup>1</sup> / <sub>8</sub> "	2 <sup>3</sup> / <sub>8</sub> "	3 <sup>1</sup> / <sub>8</sub> "	1 <sup>1</sup> / <sub>8</sub> "	3 <sup>1</sup> / <sub>8</sub> "	2 <sup>3</sup> / <sub>8</sub> "	3 <sup>3</sup> / <sub>4</sub> "	3 <sup>1</sup> / <sub>8</sub> "	1 <sup>3</sup> / <sub>8</sub> "
LT525 RTS	2 <sup>5</sup> / <sub>8</sub> " Projection	2 <sup>5</sup> / <sub>8</sub> "	2 <sup>1</sup> / <sub>2</sub> "	3 <sup>1</sup> / <sub>4</sub> "	7/ <sub>8</sub> "	3 <sup>1</sup> / <sub>4</sub> "	2 <sup>1</sup> / <sub>2</sub> "	4 <sup>1</sup> / <sub>4</sub> "	3 <sup>1</sup> / <sub>4</sub> "	1 <sup>5</sup> / <sub>8</sub> "
LT525 Std	2 <sup>5</sup> / <sub>8</sub> " Projection	2 <sup>5</sup> / <sub>8</sub> "	2 <sup>1</sup> / <sub>2</sub> "	3 <sup>1</sup> / <sub>4</sub> "	7/ <sub>8</sub> "	3 <sup>1</sup> / <sub>4</sub> "	2 <sup>1</sup> / <sub>2</sub> "	4 <sup>1</sup> / <sub>4</sub> "	3 <sup>1</sup> / <sub>4</sub> "	1 <sup>5</sup> / <sub>8</sub> "
HDC 100S Std	2 <sup>5</sup> / <sub>8</sub> " Projection	2 <sup>5</sup> / <sub>8</sub> "	2 <sup>1</sup> / <sub>2</sub> "	3 <sup>1</sup> / <sub>4</sub> "	7/ <sub>8</sub> "	3 <sup>1</sup> / <sub>4</sub> "	2 <sup>1</sup> / <sub>2</sub> "	4 <sup>1</sup> / <sub>4</sub> "	3 <sup>1</sup> / <sub>4</sub> "	1 <sup>5</sup> / <sub>8</sub> "
HDC 200S Std	2 <sup>5</sup> / <sub>8</sub> " Projection	2 <sup>5</sup> / <sub>8</sub> "	2 <sup>1</sup> / <sub>2</sub> "	3 <sup>1</sup> / <sub>4</sub> "	7/ <sub>8</sub> "	3 <sup>1</sup> / <sub>4</sub> "	2 <sup>1</sup> / <sub>2</sub> "	4 <sup>1</sup> / <sub>4</sub> "	3 <sup>1</sup> / <sub>4</sub> "	1 <sup>5</sup> / <sub>8</sub> "

— MOTORIZED BANDED ROLLER SHADE —

ST50 MOTOR (RTS) / ST50 MOTOR (STANDARD) / LS40 MOTOR (STANDARD) /  
 LT525 MOTOR (RTS) / LT525 MOTOR (STANDARD) /  
 WHISPER MOTORS™ HDC 100S (STANDARD) / WHISPER MOTORS™ HDC 200S (STANDARD)



**STANDARD COMPONENTS:**

1. Fabric
2. 2" and 3" Heavy-Duty Aluminum Roller Tube
3. 2" Sealed Pocket Hem Bar
4. Motor
5. Power Cord
6. Motor Mount Bracket
7. End Plug
8. End Plug Bracket
9. Whisper Motors™ Bracket
10. LS40 Bracket
11. LT525/ST50 Bracket

**OPTIONAL COMPONENTS:**

12. End Caps
- Fabric Covered Bottom Bar, Flat or Oval
13. Front Fascia – 3"/4"
14. Fascia Brackets
15. Fascia End Caps – 3"/4"

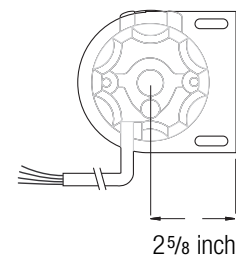
**FASCIA & BRACKET COLORS:**

- Vanilla • White • Bronze
  - Anodized • Black
- (See page 4-2 for color chart.)

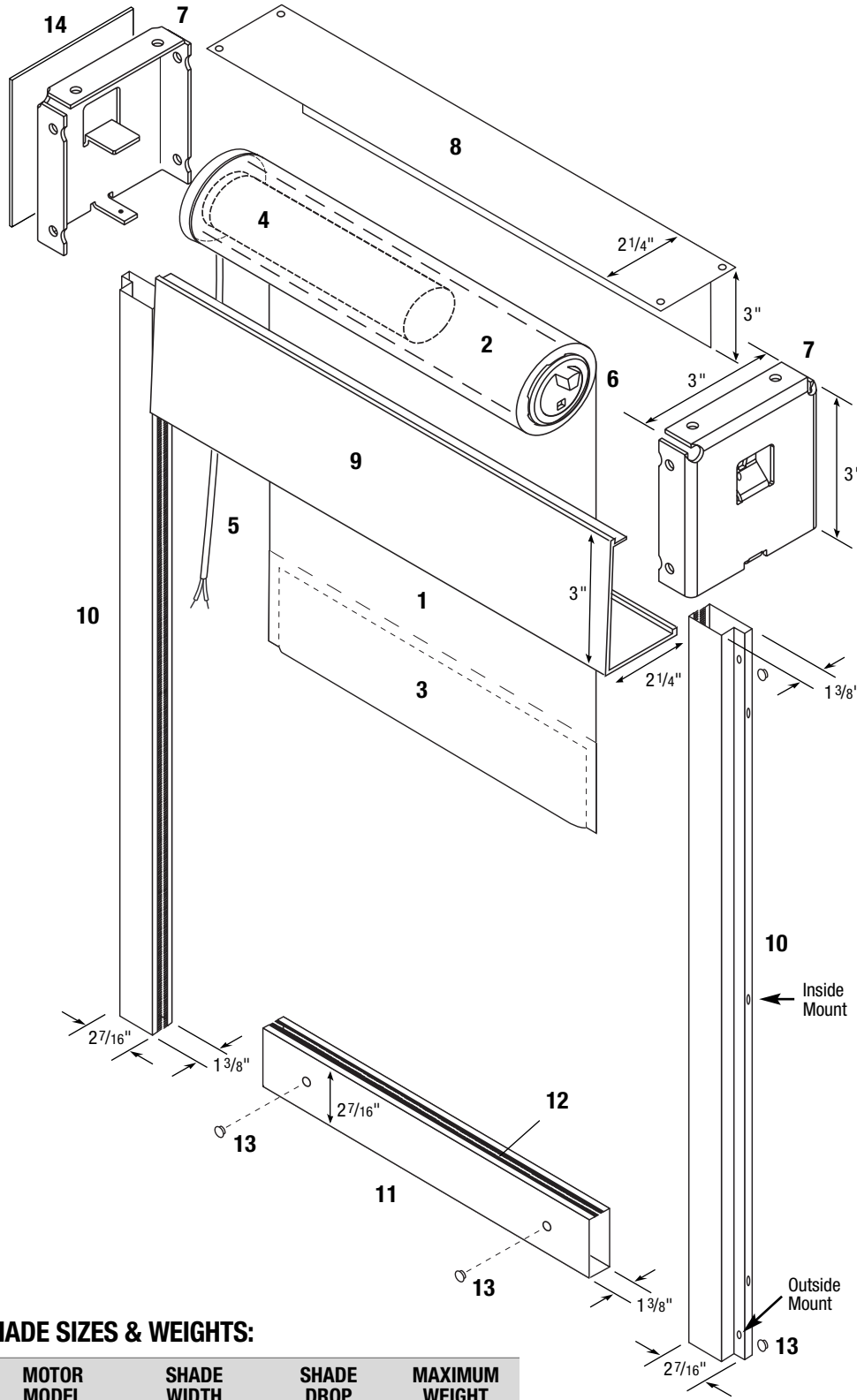
**SHADE SIZES & WEIGHTS:**

MOTOR MODEL	RPMs	SHADE WIDTH	SHADE DROP	MAXIMUM WEIGHT
ST50 RTS	30 rpm	45" – 156"	12" – 192"	24 lbs.
ST50 Std	30 rpm	45" – 156"	12" – 192"	24 lbs.
LS40 Std	30 rpm	26" – 44 <sup>7</sup> / <sub>8</sub> "	12" – 192"	20 lbs.
LT525 RTS	20 rpm	156 <sup>1</sup> / <sub>8</sub> " – 192"	12" – 192"	35 lbs.
LT525 Std	20 rpm	156 <sup>1</sup> / <sub>8</sub> " – 192"	12" – 192"	35 lbs.
Whisper HDC 100S	28 rpm	27" – 156"	12" – 192"	30 lbs.
Whisper HDC 200S	28 rpm	156 <sup>1</sup> / <sub>8</sub> " – 192"	12" – 192"	30 lbs.

**BRACKET PROJECTIONS:**



**— MOTORIZED ROLLER SHADE WITH 3" FASCIA, TOP COVER & BLOCKOUT SYSTEM —  
ST30 DC MOTOR (RTS)**



**STANDARD COMPONENTS:**

1. Fabric
2. 1 1/2" Aluminum Roller Tube
3. 2" Sealed Pocket Hem Bar
4. Motor, ST30
5. Power Cord
6. End Plug
7. 3" Fascia Brackets
8. 3" Top/Back Fascia – 3" h x 2 1/4" d
9. 3" Front Fascia – 3" h x 2 1/4" d
10. Side Channels – 2 7/16" w x 1 3/8" d
11. Bottom Channel – 2 7/16" h x 1 3/8" d
12. Wool Pile
13. Mounting Hole Plugs (outside mount only)

**OPTIONAL COMPONENTS:**

- 14. End Caps
- Fabric Covered Bottom Bar, Flat
- Fascia End Caps

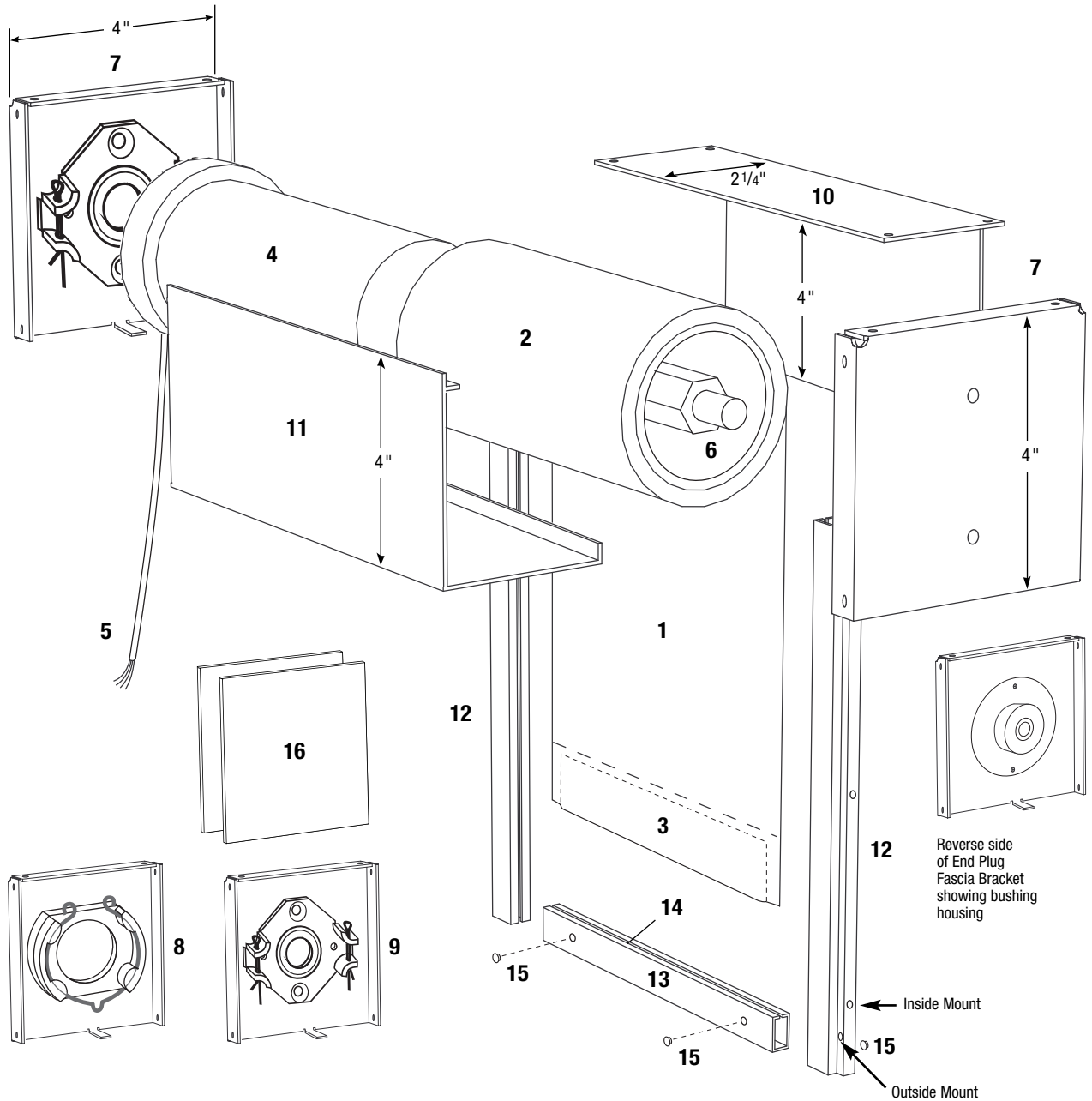
**FASCIA & BRACKET COLORS:**

- Vanilla • White • Bronze
  - Anodized • Black
- (See page 4-2 for color chart.)

**SHADE SIZES & WEIGHTS:**

MOTOR MODEL	SHADE WIDTH	SHADE DROP	MAXIMUM WEIGHT
ST30	20" – 72"	12" – 72"	12 lbs.

— **MOTORIZED ROLLER SHADE WITH 4" FASCIA, TOP COVER & BLOCKOUT SYSTEM** —  
**ST50 MOTOR (RTS) / ST50 MOTOR (STANDARD)**  
**WHISPER MOTORS™ HDC 100S (STANDARD)**



**SHADE SIZES & WEIGHTS:**

MOTOR MODEL	SHADE WIDTH	SHADE DROP	MAXIMUM WEIGHT	TUBE SIZE 4" FASCIA	MAXIMUM ROLL-UP DIAMETER*
<b>ST50 RTS</b>	45" – 156"	12" – 144"	24 lbs.	2"	37/8"
<b>ST50 Std</b>	45" – 156"	12" – 144"	24 lbs.	2"	37/8"
<b>Whisper HDC 100S</b>	27" – 156"	12" – 144"	24 lbs.	2 – 2.5" **	4"

\* Roll-up diameter varies with the thickness of the fabric and tube diameter. Contact Hunter Douglas Contract if specific roll-up diameter information is required.

\*\* Varies depending on drop

**— MOTORIZED ROLLER SHADE WITH 4" FASCIA, TOP COVER & BLOCKOUT SYSTEM —**  
**ST50 MOTOR (RTS) / ST50 MOTOR (STANDARD)**  
**WHISPER MOTORS™ HDC 100S (STANDARD)**

*(continued from previous page)*

**STANDARD COMPONENTS:**

1. Fabric
2. 2" Roller Tube
3. 2" Sealed Pocket Hem Bar
4. Motor
5. Power Cord
6. End Plug
7. 4" Fascia Brackets
8. Motor Bracket
9. Whisper Motors™ Bracket
10. 4" Top/Back Fascia – 4" h x 2<sup>3</sup>/<sub>4</sub>" d
11. 4" Front Fascia – 4" h x 2<sup>3</sup>/<sub>4</sub>" d
12. Side Channels – 2<sup>7</sup>/<sub>16</sub>" w x 1<sup>3</sup>/<sub>8</sub>" d
13. Bottom Channel – 2<sup>7</sup>/<sub>16</sub>" h x 1<sup>3</sup>/<sub>8</sub>" d
14. Wool Pile
15. Mounting Hole Plugs (outside mount only)

**OPTIONAL COMPONENTS:**

16. Fascia and Pocket End Caps
- 4" Pocket Profile
- 5.25" & 9" Pocket Profile
- Fabric Covered Bottom Bar, Flat

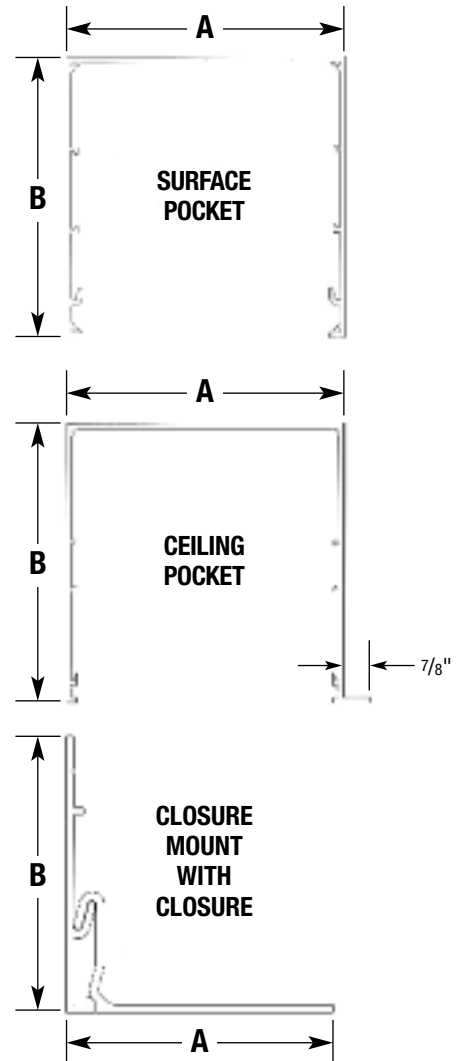
**FASCIA & BRACKET COLORS:**

- Vanilla • White • Bronze
  - Anodized • Black
- (See page 4-2 for color chart.)

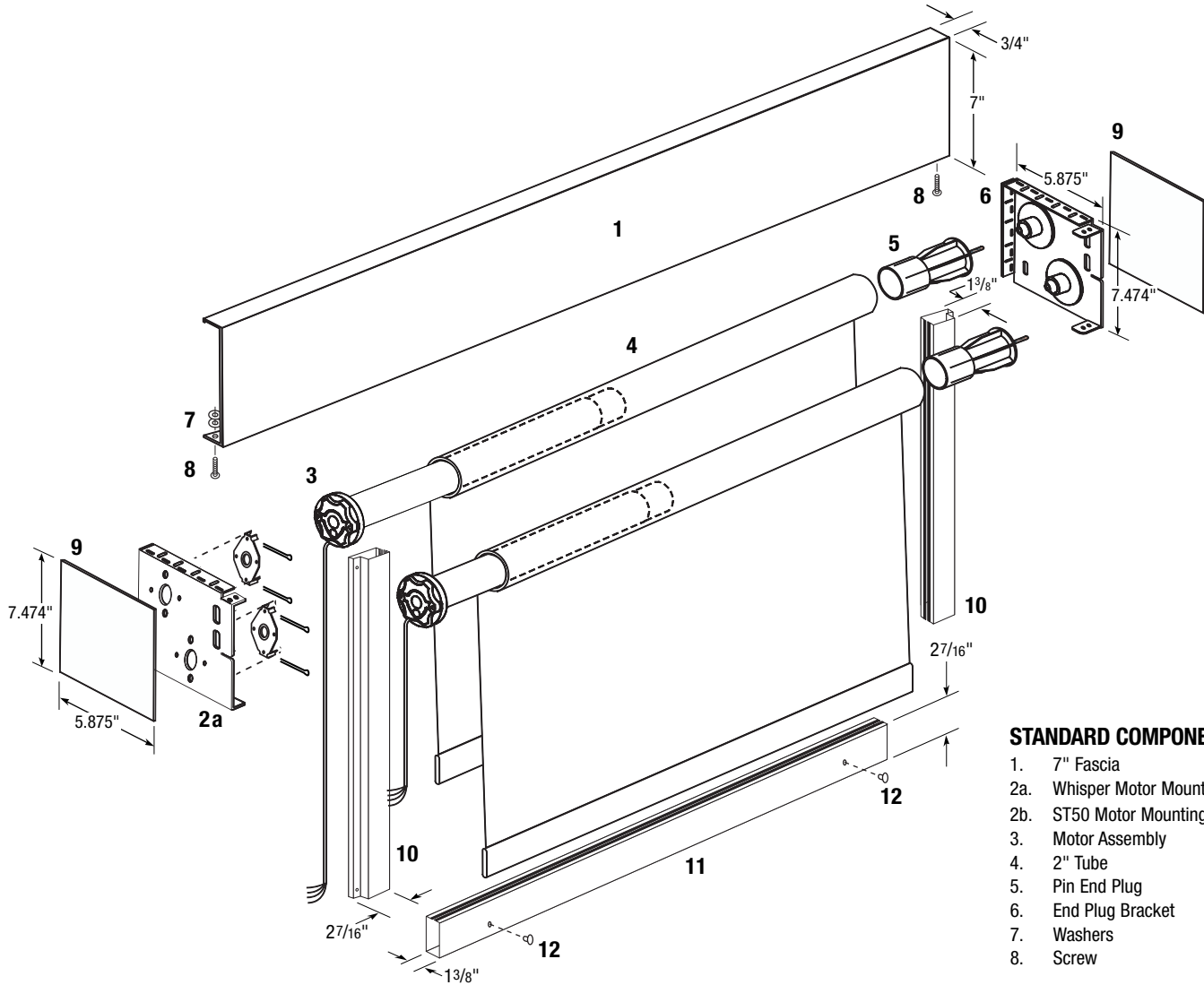
**POCKET DIMENSIONS:**

POCKET SIZE	WIDTH A	HEIGHT B
Surface Pocket	5 <sup>1</sup> / <sub>4</sub> "	5 <sup>1</sup> / <sub>4</sub> "
	9"	9"
Ceiling Pocket	5 <sup>1</sup> / <sub>4</sub> "	5 <sup>1</sup> / <sub>4</sub> "
	9"	9"
Closure Mount (B) with 2" Closure (A)	2"	2 <sup>5</sup> / <sub>16</sub> "
Closure Mount (B) with 3" Closure (A)	3"	2 <sup>5</sup> / <sub>16</sub> "
Closure Mount (B) with 5" Closure (A)	5"	2 <sup>5</sup> / <sub>16</sub> "

**POCKET PROFILES:**



**— DUAL MOTORIZED SHADE WITH FASCIA —**  
**ST50 MOTOR (RTS) / ST50 MOTOR (STANDARD) / WHISPER MOTORS™ HDC 100S (STANDARD)**



**STANDARD COMPONENTS:**

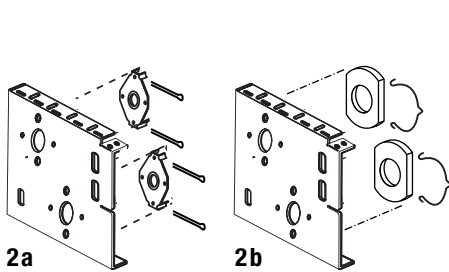
- 1. 7" Fascia
- 2a. Whisper Motor Mounting Bracket
- 2b. ST50 Motor Mounting Bracket
- 3. Motor Assembly
- 4. 2" Tube
- 5. Pin End Plug
- 6. End Plug Bracket
- 7. Washers
- 8. Screw

**OPTIONAL COMPONENTS:**

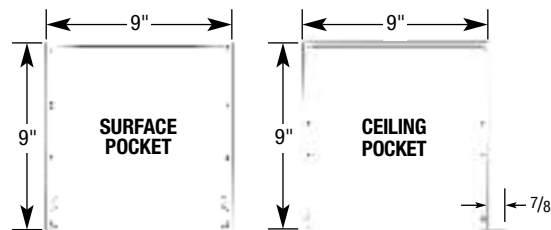
- 9. Fascia End Plate
- 10. Blockout Side Channel
- 11. Blockout Bottom Channel
- 12. Mounting Hole Plugs
- Fabric Covered Bottom Bar, Flat

**FASCIA & BRACKET COLORS:**

- Vanilla • White • Bronze
  - Anodized • Black
- (See page 4-2 for color chart.)



**POCKET PROFILES:**



**SHADE SIZES & WEIGHTS:**

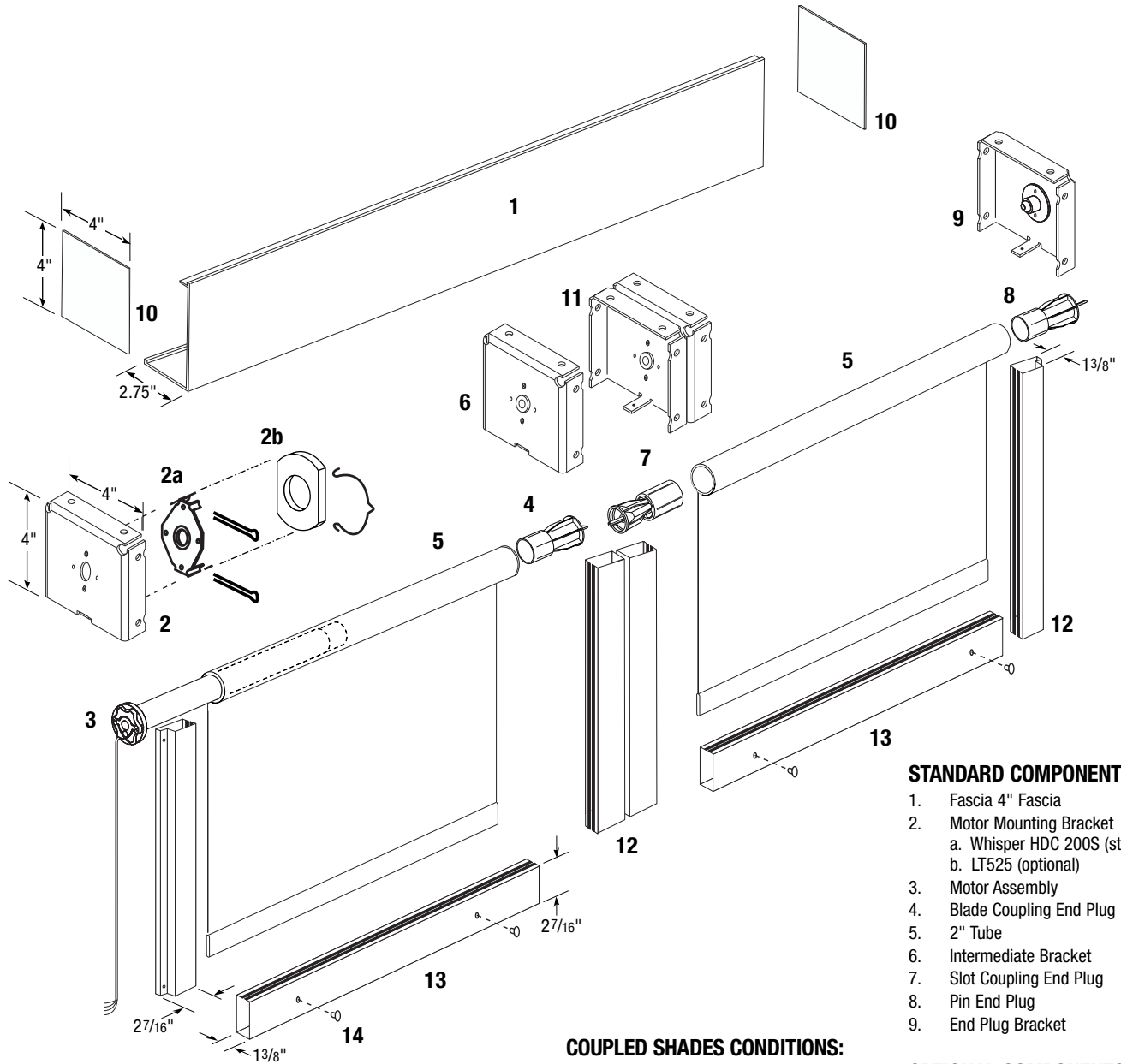
MOTOR MODEL	SHADE WIDTH	SHADE DROP	MAXIMUM WEIGHT	TUBE SIZE	MAXIMUM ROLL-UP DIAMETER*
<b>ST50 RTS</b>	45" – 156"	12" – 144"	35 lbs.	2"	4 <sup>5</sup> / <sub>8</sub> "
<b>ST50 Std</b>	45" – 156"	12" – 144"	35 lbs.	2"	4 <sup>5</sup> / <sub>8</sub> "
<b>Whisper HDC 100S</b>	27" – 156"	12" – 144"	24 lbs.	2 – 2.5" **	4 <sup>5</sup> / <sub>8</sub> "

\* Roll-up diameter varies with the thickness of the fabric and tube diameter. Contact Hunter Douglas Contract if specific roll-up diameter information is required.

\*\* Varies depending on drop

— **MOTORIZED COUPLED SHADES WITH FASCIA** —

**LT525 MOTOR (STANDARD) / LT525 MOTOR (RTS) / WHISPER MOTORS™ HDC 200S (STANDARD)**



**FASCIA & BRACKET COLORS:**

- Vanilla • White • Bronze
  - Anodized • Black
- (See page 4-2 for color chart.)

**SHADE SIZES & WEIGHTS:**

MOTOR MODEL	SHADE WIDTH	SHADE DROP	MAXIMUM WEIGHT	TUBE SIZE	MAXIMUM ROLL-UP DIAMETER*
<b>LT525 Std/RTS – Single Fascia</b>	35" – 192"	12" – 144"	24 lbs.	2"	37/8"
<b>LT525 Std/RTS – Adjoining Fascia</b>	35" – 240"	12" – 144"	24 lbs.	2"	37/8"
<b>Whisper HDC 200S</b>	31" – 192"	12" – 144"	24 lbs.	2"	4"

**STANDARD COMPONENTS:**

1. Fascia 4" Fascia
2. Motor Mounting Bracket
  - a. Whisper HDC 200S (standard)
  - b. LT525 (optional)
3. Motor Assembly
4. Blade Coupling End Plug
5. 2" Tube
6. Intermediate Bracket
7. Slot Coupling End Plug
8. Pin End Plug
9. End Plug Bracket

**OPTIONAL COMPONENTS:**

10. Fascia End Plate
  11. Intermediate Bracket For Adjoining Two Fascias
  12. Blockout Side Channel
  13. Blockout Bottom Channel
  14. Mounting Hole Plugs
- Fabric Covered Bottom Bar, Flat

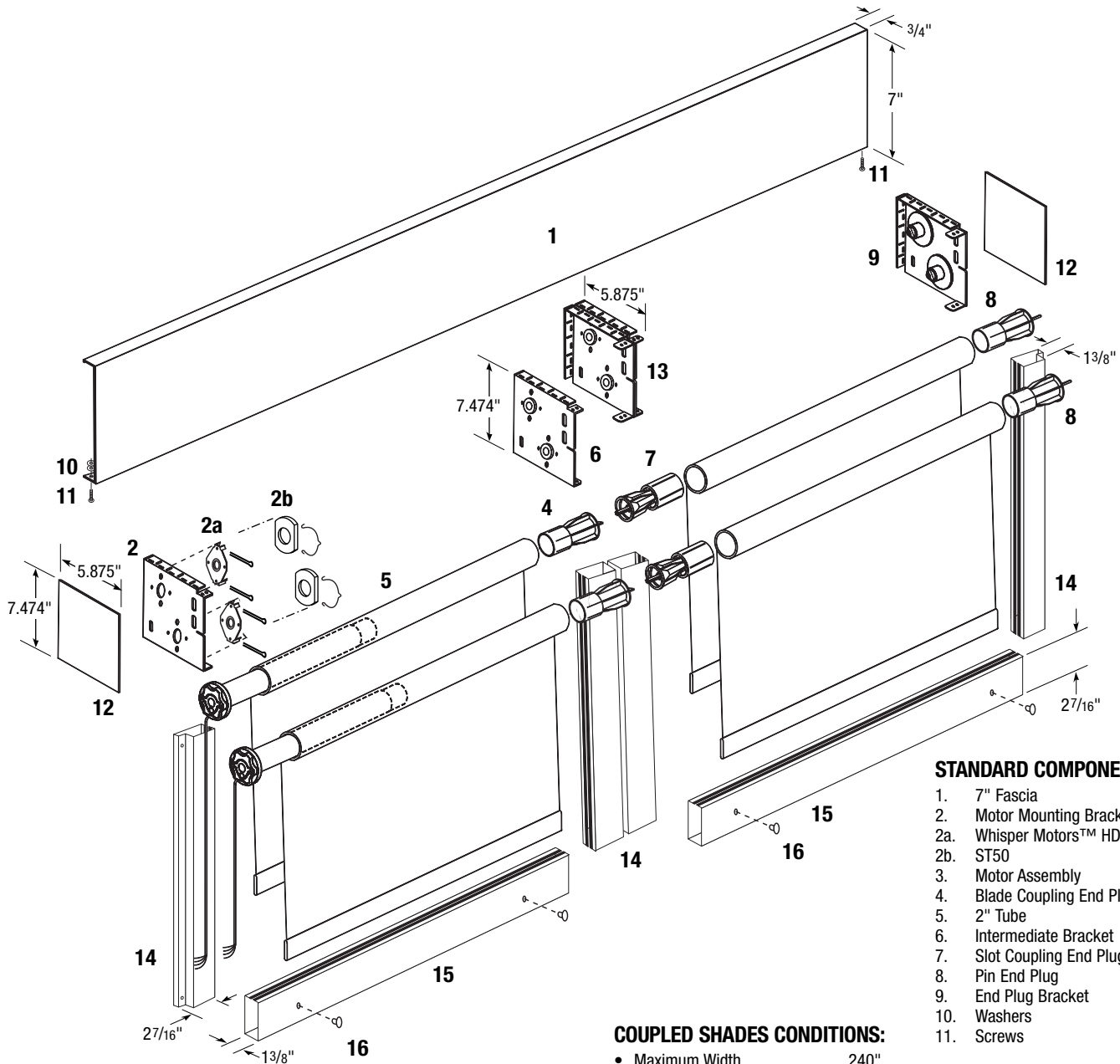
**COUPLED SHADES CONDITIONS:**

- Maximum Width ..... 240"
- Maximum Number of Bands ..... 6
- Maximum Width of Band ..... 120"
- Minimum Width of Band Non Motor Band ..... 20"
- Motor End Minimum Width
  - HDC 200S ..... 31"
  - LT525 ..... 35"
- Tube ..... 2"

\* Roll-up diameter varies with the thickness of the fabric and tube diameter. Contact Hunter Douglas Contract if specific roll-up diameter information is required.

NOTE: Over 192" width, individual fascia required

**— DUAL MOTORIZED COUPLED SHADES WITH FASCIA —**  
**LT525 MOTOR (RTS) / LT525 MOTOR (STANDARD) / WHISPER MOTORS™ HDC 200S (STANDARD)**



**STANDARD COMPONENTS:**

- 1. 7" Fascia
- 2. Motor Mounting Bracket
- 2a. Whisper Motors™ HDC 200S
- 2b. ST50
- 3. Motor Assembly
- 4. Blade Coupling End Plug
- 5. 2" Tube
- 6. Intermediate Bracket
- 7. Slot Coupling End Plug
- 8. Pin End Plug
- 9. End Plug Bracket
- 10. Washers
- 11. Screws

**COUPLED SHADES CONDITIONS:**

- Maximum Width ..... 240"
- Maximum Number of Bands ..... 6
- Maximum Width of Band ..... 120"
- Minimum Width of Band
- Non Motor Band ..... 20"
- Motor End Minimum Width
- HDC 200S ..... 31"
- LT525 ..... 35"
- Tube ..... 2"

**FASCIA & BRACKET COLORS:**

- Vanilla • White • Bronze
  - Anodized • Black
- (See page 4-2 for color chart.)

**OPTIONAL COMPONENTS:**

- 12. Fascia End Plate
- 13. Intermediate Bracket For Adjoining Two Fascias
- 14. Blockout Side Channel
- 15. Blockout Bottom Channel
- 16. Mounting Hole Plugs
- Fabric Covered Bottom Bar, Flat

**SHADE SIZES & WEIGHTS:**

MOTOR MODEL	SHADE WIDTH	SHADE DROP	MAXIMUM WEIGHT	TUBE SIZE	MAXIMUM ROLL-UP DIAMETER*
<b>LT525 Std/RTS – Single Fascia</b>	35" – 192"	12" – 144"	24 lbs.	2"	3.5"
<b>LT525 Std/RTS – Individual Fascia</b>	35" – 240"	12" – 144"	24 lbs.	2"	3.5"
<b>Whisper HDC 200S</b>	31" – 192"	12" – 144"	24 lbs.	2"	3.5"

\* Roll-up diameter varies with the thickness of the fabric and tube diameter. Contact Hunter Douglas Contract if specific roll-up diameter information is required.

NOTE: Over 192" width, individual fascia required

## MOTORS

### Standard Motors

Maintenance-free and permanently lubricated. Features overheating protection, sturdy electrical and mechanical design. Electromagnetic disk brake for a smooth and accurate stop without slippage.

MODEL	MINIMUM WIDTH
<b>LS40</b>	26"
<b>ST50</b>	45"
<b>LT525</b>	156"
<b>HDC 100S, HDC 200S</b>	31"

### RTS Motors

With the RTS motor, the end user can have wireless control over any motorized window covering via a radio remote control or an RTS wall switch within a range of up to 90 feet in open space and up to 65 feet through two concrete walls.

MODEL	MINIMUM WIDTH
<b>ST30 (DC)</b>	20"
<b>ST50 RTS</b>	45"
<b>LT525 RTS</b>	156"

## CONTROLS

### MODEL DESCRIPTION

#### AC CONTROLS – UNIVERSAL MOUNT INDIVIDUAL CONTROL



**RQ60AUMHG**  
(217000001)

Remotely queryable 1 motor controller. Allows for shades to be individually or group controlled. Total switch load 9.8 amps.

**L: 2.25" W: 2.75" H: 1.0"**

#### AC CONTROLS – PLUG & PLAY BOXES



**RP60ABMH-SINGLE**  
(2170000015)

60 Channel Control in "Plug & Play" box for a single AC motor. Kit includes male plug for motor attachment.

**L: 5.5" W: 3.25" H: 2.0"**



**RP60ABMH2-DOUBLE**  
(2170000016)

60 Channel Control in "Plug & Play" box for two AC motors.

**L: 5.5" W: 3.25" H: 2.0"**

#### AC CONTROLS – GROUP CONTROL MOUNTED IN ENCLOSURE



**ISO4B**  
(2170000021)

ISO4B allows user to switch up to 4 AC motors from any switched source. Can be daisy-chained to accommodate up to 12 AC motors. Customized panels available for additional motors.

**L: 8.0" W: 8.0" H: 4.0"**

## POWER CORDS

### MODEL DESCRIPTION




**LT CABLE**






Available with 4 wire (Standard Motors) and 3 wire (RTS) and with plug attached. Sizes 3 ft, 6 ft, 12 ft, 18 ft, and 24 ft.

— **MOTORIZATION COMPONENTS** —


**DC TRANSFORMERS**

MODEL	DESCRIPTION
 <p><b>ST30 DC TRANSFORMER</b></p>	<p>Whenever DC motors or controls are specified, DC transformers must accompany them.</p> <ul style="list-style-type: none"> <li>• 2.5 amp 24 (1 motor) <b>RC445117</b></li> <li>• 5.0 amp 24 (2 motor) <b>RC445264</b></li> <li>• 10 amp 24 (4 motor) <b>RC445265</b></li> </ul>

**SWITCHES – STANDARD MOTORS**



MODEL	DESCRIPTION
 <p><b>RP BUS KEYPAD K6ST</b> (217000080)</p>	Keypad (Wall Switch) for operating RPs or RQs on channels 1 through 6. System programming unavailable.
 <p><b>RP BUS KEYPAD K24ST</b> (217000079)</p>	Keypad (Wall Switch) for operating RPs or RQs on channels 1 through 24 and ALL. Fully functional programming available.
 <p><b>MAINTAINED ROCKER SWITCH</b> (RC 445050 WHITE) (RC 445064 IVORY)</p>	Provides easy control of all types of motorized window coverings.
 <p><b>KEY SWITCH</b> (RC 445126 MOMENTARY) (RC 445127 MAINTAINED)</p>	Protected by a tamper-proof cover that cannot be removed without inserting the key. Includes heavy duty and light models with either momentary or maintained operation.
 <p><b>MAINTAINED PADDLE SWITCH</b> (RC 242101 WHITE) (RC 242329 IVORY)</p>	Designed for AC motors.

**SWITCHES – RTS MOTORS**


MODEL	DESCRIPTION
 <p><b>RTS SWITCH</b> (RC 445135 SINGLE CHANNEL) (RC 445136 5-CHANNEL)</p>	<p>The RTS Switch (single or five channel) is a wireless radio transmitter.</p> <p><b>L: 4.5" W: 2.75" D: 1.25"</b></p>

— MOTORIZATION COMPONENTS —


**REMOTE TRANSMITTERS – STANDARD MOTORS**

MODEL	DESCRIPTION
 <p><b>T6S DUAL 433</b> (2170000055)</p>	IR & RF Transmitter for operating RPs or RQs on channels 1 through 6.
 <p><b>T24S DUAL 433</b> (2170000054)</p>	IR & RF Transmitter for operating and programming RPs or RQs on channels 1 through 24.



**REMOTE TRANSMITTERS – RTS MOTORS**

MODEL	DESCRIPTION
 <p><b>TELIS</b> (PCN # RC445069 – SINGLE CHANNEL) (PCN # RC445079 – 5 CHANNEL)</p>	Hand held remotes 1 or 5 channel for operating RTS motors


**AUTOMATION COMMUNICATION**

MODEL	DESCRIPTION
 <p><b>RQ BRIDGE</b> (PCN # 217000003)</p>	Serial Bridge to communicate between automation systems and RQ60 motor controllers.

**IR RECEIVING EYE**




MODEL	DESCRIPTION
 <p><b>RE-6S</b> (2170000097)</p>	IR Receiver Eye on 6 ft. modular cable.
 <p><b>REB V2</b> (2170000100)</p>	IR Receiver Eye in white, wall mount case. Modern styling and construction. <b>L: 2.1" W: 1.75" H: 1.1"</b>

**RF RECEIVER**



MODEL	DESCRIPTION
 <p><b>RR433 V2</b> (2170000095)</p>	433MHz Radio Receiver module complete with white plastic enclosure and external antenna. Programmable pairing up to 5 transmitters. <b>L: 3.8" W: 3.8"</b>

— **MOTORIZATION COMPONENTS** —

**SENSORS**

	<b>MODEL</b>	<b>DESCRIPTION</b>
	<b>LTSEN INT V2</b> (2170000120)	Sun sensor installed in an interior box. <b>L: 2.1" W: 1.75" H: 1.1"</b>
	<b>PSSW</b> (2170000125)	Programmable Switch Sun and Wind Sensor control unit.
	<b>TIMER</b> (RC445129)	Wireless digital timer compatible with all RTS motors. Includes built-in Sun Sensor. <b>L: 3.125" W: 3.125" H: 1"</b>

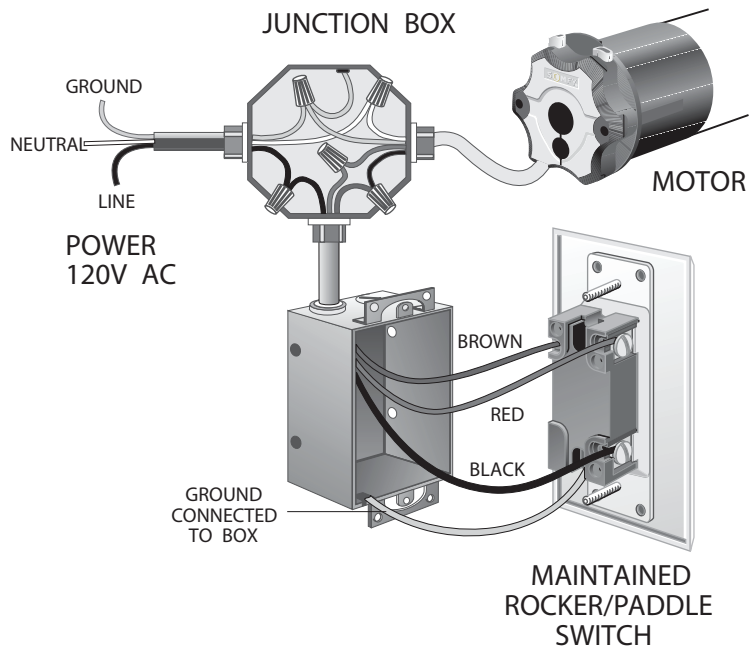
**PLUGS**

	<b>MODEL</b>	<b>DESCRIPTION</b>
	<b>MPS</b> (2170000234)	AC Motor Plug Set. Two part set for use as a 4-wire disconnect of AC motors. <b>L: 4.25"</b>
	<b>WEP</b> (2170000177)	Wall Entry Plate. Kit comes complete with: single gang cover plate – white only with two screws. 90° 4-conductor UL plug, male plug for motor wire, tool (not required to assemble) and strain relief.

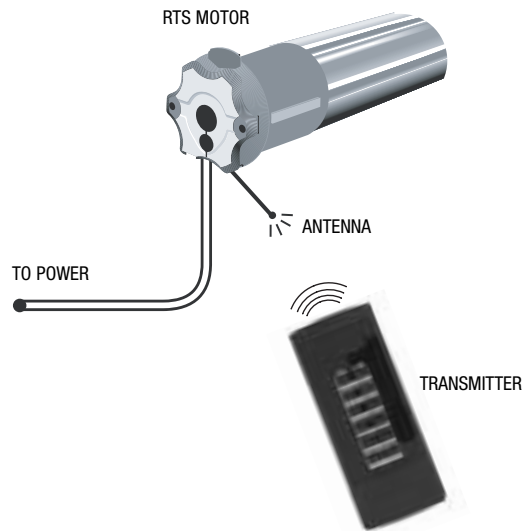
Customization available for AC controls. Sun and wind variables automation systems, and building management systems. Contact Hunter Douglas Contract for assistance.

— WIRING DIAGRAMS —

**LS40 / ST50 / LT525 STANDARD**



**LT525 / ST50 RTS**

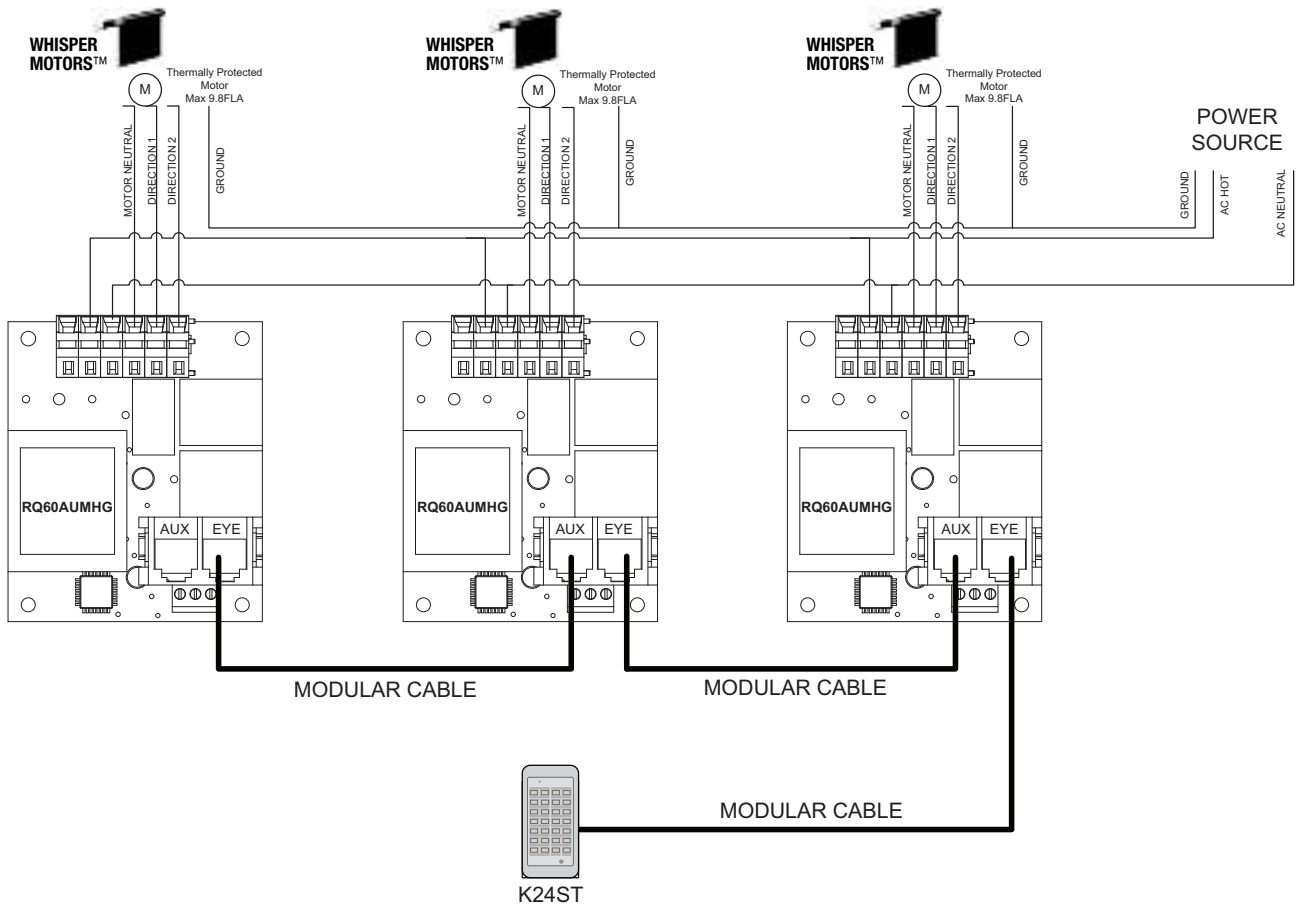


— WIRING DIAGRAMS —

ST30 RTS



GENERAL WIRING MOTOR CONTROLLERS



**— MOTORIZATION COMPONENTS & MOTOR COMPATIBILITY CHART —**

MOTORIZATION COMPONENT	AVAILABLE MOTORS							
	LS40 STD	ST50 STD	LT525 STD	WHISPER HDC 100S STD	WHISPER HDC 200S STD	ST30 DC	ST50 RTS	LT525 RTS
<b>RQ60AUMHG</b> – Universal mount individual control motor controller	●	●	●	●	●			
<b>ISO4B</b> – Enclosed control to switch up to 4 motors	●	●	●	●	●			
<b>RP60ABMH</b> – Plug & play control box-single motor	●	●	●	●	●			
<b>RP60ABMH2</b> – Plug & play control box-two motors	●	●	●	●	●			
<b>LT CABLE</b> – Power cord with 3 or 4 wires	●	●	●	●	●			
<b>DC TRANSFORMER</b> – All DC motors require transformers						●		
<b>RP BUS K6ST</b> – Wall switch for operating RPs/RQs channels 1-6	●	●	●	●	●			
<b>RP BUS K24ST</b> – Wall switch for operating RPs/RQs channels 1-24	●	●	●	●	●			
<b>ROCKER SWITCH</b> – Fingertip control with up, down, & center stop	●	●	●	●	●			
<b>KEY SWITCH</b> – Momentary or maintained operation security switch	●	●	●	●	●			
<b>DECORATOR PADDLE SWITCH</b> – Designed for AC motors	●	●	●	●	●			
<b>RTS SWITCH</b> – Single or four channel wireless radio transmitter						●	●	●
<b>T6S DUAL 433</b> – Remote transmitter operating RPs/RQs channels 1-6	●	●	●	●	●			
<b>T24S DUAL 433</b> – Remote transmitter operating RPs/RQs channels 1-24	●	●	●	●	●			
<b>TELIS REMOTE TRANSMITTER</b> – Used to operate RTS motors						●	●	●
<b>RQ BRIDGE</b> – To communicate with automation systems	●	●	●	●	●			
<b>RE-6S</b> – Infrared receiving eye on 6 ft. modular cable	●	●	●	●	●			
<b>REB V2</b> – Infrared receiving eye in a white wall mount case	●	●	●	●	●			
<b>RR433 V2</b> – Radio receiver programmable with up to 5 transmitters	●	●	●	●	●			
<b>LTSEN INT V2</b> – Sun sensor installed in an interior box	●	●	●	●	●			
<b>PSSW</b> – Programmable switch sun & wind sensor control unit	●	●	●	●	●			
<b>TIMER</b> – Wireless digital timer compatible with all RTS motors						●	●	●
<b>MPS</b> – AC motor plug set. Used as a 4 wire disconnect of AC motors	●	●	●	●	●			
<b>WEP</b> – Wall entry plate 90° 4 conductor UL plug	●	●	●	●	●			

# Deduction Charts

DEDUCTION CHARTS



## — DEDUCTION CHARTS —

(Ordering dimensions versus finished product dimensions.  
All deductions/additions are based on customer's IM or OM size.)

### Manual Roller Shade (Single Shade)

Clutch Model	Tube Plus Fabric	Finished Shade With Brackets
<b>INSIDE MOUNT (IM)</b>		
<b>R8</b>	Ordered Width – 1 1/4"	Ordered Width – 1/8"
<b>R16</b>	Ordered Width – 1 3/8"	Ordered Width – 1/8"
<b>G40</b>	Ordered Width – 1 1/2"	Ordered Width – 1/8"
<b>R24 with Spring Assist</b>	Ordered Width – 1 1/2"	Ordered Width – 1/8"
Finished Drop	Ordered Drop	+ 1/8"
Fascia	Ordered Width	– 1/8"
<b>OUTSIDE MOUNT (OM)</b>		
<b>R8</b>	Ordered Width – 1 1/8"	Ordered Width
<b>R16</b>	Ordered Width – 1 1/4"	Ordered Width
<b>G40</b>	Ordered Width – 1 3/8"	Ordered Width
<b>R24 with Spring Assist</b>	Ordered Width – 1 3/8"	Ordered Width
Finished Drop	Ordered Drop	+ 1/8"
Fascia	Ordered Width	Ordered Width

### Standard Dual Manual Roller Shades

	Standard Deduction/Addition
<b>INSIDE MOUNT (IM)</b>	
2" Tube/Fabric (Galaxy Clutch with Adapter)	Ordered Width – 1 5/8"
2 1/2" Tube/Fabric	Ordered Width – 1 3/4"
Finished Width	Ordered Width – 1/8"
Finished Drop	Ordered Drop
<b>OUTSIDE MOUNT (OM)</b>	
2" Tube/Fabric (Galaxy Clutch with Adapter)	Ordered Width – 1 1/2"
2 1/2" Tube/Fabric	Ordered Width – 1 5/8"
Finished Width	Ordered Width
Finished Drop	Ordered Drop

**— DEDUCTION CHARTS —**

(Ordering dimensions versus finished product dimensions.  
All deductions/additions are based on customer's IM or OM size.)

**3" Blockout Manual Roller Shade** (Roller Shade with Fascia and Side Channels)

	<b>Standard Deduction/Addition</b>	<b>Accepted Tolerances</b>
<b>INSIDE MOUNT (IM)</b>		
1 1/2" Tube/Fabric (R16 Clutch only)	Ordered Width – 1 3/8"	± 1/16"
1 1/8" Tube/Fabric (R8 Clutch only)	Ordered Width – 1 1/4"	± 1/16"
Side Channel & Wool Pile	Ordered Width – 3 1/8"	+ 1/16"
Bottom Channel & Wool Pile	Ordered Width – 5"	+ 1/16"
Fascia	Ordered Width – 1/8"	– 1/16"
<b>OUTSIDE MOUNT (OM)</b>		
1 1/2" Tube/Fabric (R16 Clutch only)	Ordered Width – 1 1/4"	± 1/16"
1 1/8" Tube/Fabric (R8 Clutch only)	Ordered Width – 1 1/8"	± 1/16"
Side Channel & Wool Pile	Ordered Width – 3 1/8"	+ 1/16"
Bottom Channel & Wool Pile	Ordered Width – 4 7/8"	+ 1/16"
Fascia	Ordered Width	– 1/16"

**4" Blockout Manual Roller Shade** (Roller Shade with Fascia and Side Channels)

	<b>Standard Deduction/Addition</b>	<b>Accepted Tolerances</b>
<b>INSIDE MOUNT (IM)</b>		
1 1/2" Tube/Fabric (R16 Clutch only)	Ordered Width – 1 3/8"	± 1/16"
1 1/8" Tube/Fabric (R8 Clutch only)	Ordered Width – 1 1/4"	± 1/16"
Side Channel & Wool Pile	Ordered Width – 4 1/8"	+ 1/16"
Bottom Channel & Wool Pile	Ordered Width – 5"	+ 1/16"
Fascia	Ordered Width – 1/8"	– 1/16"
<b>OUTSIDE MOUNT (OM)</b>		
1 1/2" Tube/Fabric (R16 Clutch only)	Ordered Width – 1 1/4"	± 1/16"
1 1/8" Tube/Fabric (R8 Clutch only)	Ordered Width – 1 1/8"	± 1/16"
Side Channel & Wool Pile	Ordered Width – 4 1/8"	+ 1/16"
Bottom Channel & Wool Pile	Ordered Width – 4 7/8"	+ 1/16"
Fascia	Ordered Width	– 1/16"

## — DEDUCTION CHARTS —

(Ordering dimensions versus finished product dimensions.  
All deductions/additions are based on customer's IM or OM size.)

### Manual Roller Shade Extruded Pocket

Pocket Size	Pocket Length	Closure Length	Closure Mount Strip
<b>INSIDE MOUNT (IM)</b>			
5 1/4"	Ordered Width – 3/8"	Ordered Width – 1"	Ordered Width – 1/8"
9" (Dual Shade)	Ordered Width – 1/2"	Ordered Width – 1"	Ordered Width – 1/8"
<b>OUTSIDE MOUNT (OM)</b>			
5 1/4"	Ordered Width – 1/4"	Ordered Width – 1"	Ordered Width
9" (Dual Shade)	Ordered Width – 5/8"	Ordered Width – 1"	Ordered Width

### Motorized Shade (1 1/2" Tube)

Motor Model:	1 1/2" Tube Plus fabric	Finished Overall Width	Finished Drop
<b>INSIDE MOUNT (IM):</b>			
ST30	Ordered Width – 1 1/8"	Ordered Width – 1/8"	Ordered Drop
<b>OUTSIDE MOUNT (OM):</b>			
ST30	Ordered Width – 1"	Ordered Width	Ordered Drop

### Motorized Shade (2" Tube)

Motor Model:	2" Tube Plus fabric	Finished Overall Width	Finished Drop
<b>INSIDE MOUNT (IM):</b>			
ST50	Ordered Width – 2"	Ordered Width – 1/8"	Ordered Drop ± 1/8"
LS40	Ordered Width – 2"	Ordered Width – 1/8"	Ordered Drop ± 1/8"
HDC 100S	Ordered Width – 1 3/4"	Ordered Width – 1/8"	Ordered Drop ± 1/8"
<b>OUTSIDE MOUNT (OM):</b>			
ST50	Ordered Width – 2 1/8"	Ordered Width	Ordered Drop
LS40	Ordered Width – 1 7/8"	Ordered Width	Ordered Drop
HDC 100S	Ordered Width – 1 5/8"	Ordered Width	Ordered Drop

**— DEDUCTION CHARTS —**

(Ordering dimensions versus finished product dimensions.  
All deductions/additions are based on customer's IM or OM size.)

<b>Wide Motorized Shade (2 1/2" &amp; 3" Tubes)</b>			
<b>Motor Model:</b>	<b>2 1/2" &amp; 3" Tubes Plus fabric</b>	<b>Finished Width</b>	<b>Finished Drop</b>
<b>INSIDE MOUNT (IM):</b>			
<b>ST50</b>	Ordered Width – 2 3/8"	Ordered Width – 1/8"	Ordered Drop ± 1/8"
<b>HDC 100S</b>	Ordered Width – 1 7/8"	Ordered Width – 1/8"	Ordered Drop ± 1/8"
<b>LT525</b>	Ordered Width – 2 3/8"	Ordered Width – 1/8"	Ordered Drop ± 1/8"
<b>HDC 200S</b>	Ordered Width – 1 7/8"	Ordered Width – 1/8"	Ordered Drop ± 1/8"
<b>OUTSIDE MOUNT (OM):</b>			
<b>ST50</b>	Ordered Width – 2 1/4"	Ordered Width	Ordered Drop
<b>HDC 100S</b>	Ordered Width – 1 3/4"	Ordered Width	Ordered Drop
<b>LT525</b>	Ordered Width – 2 1/4"	Ordered Width	Ordered Drop
<b>HDC 200S</b>	Ordered Width – 1 3/4"	Ordered Width	Ordered Drop

<b>Motorized Shade with Fascia (2" Tube)</b>			
<b>Motor Model:</b>	<b>2" Tube Plus fabric</b>	<b>Finished Width</b>	<b>Finished Drop</b>
<b>INSIDE MOUNT (IM):</b>			
<b>ST50</b>	Ordered Width – 2 1/8"	Ordered Width – 1/8"	Ordered Drop ± 1/8"
<b>LS40</b>	Ordered Width – 2"	Ordered Width – 1/8"	Ordered Drop ± 1/8"
<b>HDC 100S</b>	Ordered Width – 1 7/8"	Ordered Width – 1/8"	Ordered Drop ± 1/8"
<b>OUTSIDE MOUNT (OM):</b>			
<b>ST50</b>	Ordered Width – 2"	Ordered Width	Ordered Drop
<b>LS40</b>	Ordered Width – 1 7/8"	Ordered Width	Ordered Drop
<b>HDC 100S</b>	Ordered Width – 1 3/4"	Ordered Width	Ordered Drop

## — DEDUCTION CHARTS —

(Ordering dimensions versus finished product dimensions.  
All deductions/additions are based on customer's IM or OM size.)

### Wide Motorized Shade with Fascia (2 1/2" Tube)

Motor Model:	2 1/2" Tube Plus Fabric	Finished Width	Finished Drop
<b>INSIDE MOUNT (IM):</b>			
<b>ST50</b>	Ordered Width – 2 1/4"	Ordered Width – 1/8"	Ordered Drop ± 1/8"
<b>HDC 100S</b>	Ordered Width – 2"	Ordered Width – 1/8"	Ordered Drop ± 1/8"
<b>LT525</b>	Ordered Width – 2 1/4"	Ordered Width – 1/8"	Ordered Drop ± 1/8"
<b>HDC 200S</b>	Ordered Width – 2"	Ordered Width – 1/8"	Ordered Drop ± 1/8"
<b>OUTSIDE MOUNT (OM):</b>			
<b>ST50</b>	Ordered Width – 2 1/8"	Ordered Width	Ordered Drop
<b>HDC 100S</b>	Ordered Width – 1 7/8"	Ordered Width	Ordered Drop
<b>LT525</b>	Ordered Width – 2 1/8"	Ordered Width	Ordered Drop
<b>HDC 200S</b>	Ordered Width – 1 7/8"	Ordered Width	Ordered Drop

### 4" Blockout Motorized Roller Shade (with Fascia and Side Channels)

	Standard Deduction/Addition	Accepted Tolerances
<b>INSIDE MOUNT (IM)</b>		
2" Tube/Fabric (ST50 & LT525)	Ordered Width – 2 1/8"	± 1/16"
2" Tube/Fabric (HDC 100S & HDC 200S)	Ordered Width – 1 7/8"	± 1/16"
2 1/2" Tube/Fabric (ST50 & LT525)	Ordered Width – 2 1/4"	± 1/16"
2 1/2" Tube/Fabric (HDC 100S & HDC 200S)	Ordered Width – 2"	± 1/16"
Side Channel & Wool Pile	Ordered Width – 4 1/8"	+ 1/16"
Bottom Channel & Wool Pile	Ordered Width – 5"	+ 1/16"
Fascia	Ordered Width – 1/8"	– 1/16"
<b>OUTSIDE MOUNT (OM)</b>		
2" Tube/Fabric (ST50 & LT525)	Ordered Width – 2"	± 1/16"
2" Tube/Fabric (HDC 100S & HDC 200S)	Ordered Width – 1 3/4"	± 1/16"
2 1/2" Tube/Fabric (ST50 & LT525)	Ordered Width – 2 1/8"	± 1/16"
2 1/2" Tube/Fabric (HDC 100S & HDC 200S)	Ordered Width – 1 7/8"	± 1/16"
Side Channel & Wool Pile	Ordered Width – 4 1/8"	+ 1/16"
Bottom Channel & Wool Pile	Ordered Width – 4 7/8"	+ 1/16"
Fascia	Ordered Width	– 1/16"

**— DEDUCTION CHARTS —**

(Ordering dimensions versus finished product dimensions.  
All deductions/additions are based on customer's IM or OM size.)

**7" Blockout Motorized Roller Shade** (with Fascia and Side Channels)

	<b>Standard Deduction/Addition</b>	<b>Accepted Tolerances</b>
<b>INSIDE MOUNT (IM)</b>		
2" Tube/Fabric (ST50 & LT525)	Ordered Width – 2 1/8"	± 1/16"
2" Tube/Fabric (HDC 100S & HDC 200S)	Ordered Width – 1 7/8"	± 1/16"
2 1/2" Tube/Fabric (ST50 & LT525)	Ordered Width – 2 1/4"	± 1/16"
2 1/2" Tube/Fabric (HDC 100S & HDC 200S)	Ordered Width – 2"	± 1/16"
Side Channel & Wool Pile	Ordered Width – 7 5/8"	+ 1/16"
Bottom Channel & Wool Pile	Ordered Width – 5"	+ 1/16"
Fascia	Ordered Width – 1/8"	– 1/16"
<b>OUTSIDE MOUNT (OM)</b>		
2" Tube/Fabric (ST50 & LT525)	Ordered Width – 2"	± 1/16"
2" Tube/Fabric (HDC 100S & HDC 200S)	Ordered Width – 1 3/4"	± 1/16"
2 1/2" Tube/Fabric (ST50 & LT525)	Ordered Width – 2 1/8"	± 1/16"
2 1/2" Tube/Fabric (HDC 100S & HDC 200S)	Ordered Width – 1 7/8"	± 1/16"
Side Channel & Wool Pile	Ordered Width – 7 5/8"	+ 1/16"
Bottom Channel & Wool Pile	Ordered Width – 4 7/8"	+ 1/16"
Fascia	Ordered Width	– 1/16"

**5 1/4" Pocket** (with Side & Bottom Channels)

	<b>Standard Deduction/Addition</b>	<b>Accepted Tolerances</b>
<b>INSIDE MOUNT (IM)</b>		
Side Channel & Wool Pile	Ordered Width – 5 3/8"	+ 1/16"
Bottom Channel & Wool Pile	Ordered Width – 5"	+ 1/16"
<b>OUTSIDE MOUNT (OM)</b>		
Side Channel & Wool Pile	Ordered Width – 5 3/8"	+ 1/16"
Bottom Channel & Wool Pile	Ordered Width – 4 7/8"	+ 1/16"

## — DEDUCTION CHARTS —

(Ordering dimensions versus finished product dimensions.  
All deductions/additions are based on customer's IM or OM size.)

### 9" Pocket (with Side & Bottom Channels)

	Standard Deduction/Addition	Accepted Tolerances
<b>INSIDE MOUNT (IM)</b>		
Side Channel & Wool Pile	Ordered Width – 9 1/8"	+ 1/16"
Bottom Channel & Wool Pile	Ordered Width – 5"	+ 1/16"
<b>OUTSIDE MOUNT (OM)</b>		
Side Channel & Wool Pile	Ordered Width – 9 1/8"	+ 1/16"
Bottom Channel & Wool Pile	Ordered Width – 4 7/8"	+ 1/16"

### Motorized Roller Shade Extruded Pocket

Pocket Size	Pocket Length	Closure Length	Closure Mount Strip
<b>INSIDE MOUNT (IM)</b>			
5 1/4"	Ordered Width – 3/8"	Ordered Width – 1/2"	Ordered Width – 1/8"
9"	Ordered Width – 1/2"	Ordered Width – 5/8"	Ordered Width – 1/8"
<b>OUTSIDE MOUNT (OM)</b>			
5 1/4"	Ordered Width – 1/4"	Ordered Width – 3/8"	Ordered Width
9"	Ordered Width – 3/8"	Ordered Width – 1/2"	Ordered Width

**For additional deduction information related to  
Coupled Shades, Dual Coupled Shades, and Banded Shades,  
contact Hunter Douglas Hospitality.**



Intercontinental Hotel, Dubai

## PROJECT LIST

Over the years, Hunter Douglas has built relationships with many hotel, resort and gaming properties nationwide. A partial list:

- Aria at City Center, Las Vegas
- Aureole Restaurant, New York
- Bellagio, Las Vegas
- Candlewood Suites (nationwide)
- Caesars Palace, Las Vegas
- Consolidated Resorts Club de Soleil
- Cosmopolitan, Las Vegas
- Hampton Inns (nationwide)
- Hard Rock Hotel & Casino, Las Vegas
- Hard Rock Hotel, Macau
- Harrah's Hotel & Casino, Las Vegas
- Hilton Grand Vacation Club (multiple)
- Hilton Las Vegas
- The Doyle Collection, Boston, Washington DC
- Mandalay Bay Hotel & Casino, Las Vegas
- Marriott Brand Hotels (nationwide)
- MGM Hotel & Casino, Las Vegas
- Moana Surfrider, Waikiki
- New York New York Hotel & Casino, Las Vegas
- Outrigger Hotel & Resort, Honolulu
- Paris Hotel & Resort, Las Vegas
- Red Rocks Hotel & Casino, Las Vegas
- Sheraton Hotels, Honolulu
- Sky Lodge, Aspen
- Starwood ALOFT (nationwide)
- Treasure Island, Las Vegas
- Vdara at City Center, Las Vegas
- Venetian Hotel & Casino, Las Vegas
- Wynn Hotel, Las Vegas
- Wynn Encore, Las Vegas
- Wynn Diamond Tower, Macau



Guest Room, Mirage Casino



World Headquarters for IFAW

## **ABOUT HUNTER DOUGLAS HOSPITALITY**

Hunter Douglas offers the most comprehensive range of shades and window coverings in the industry, along with custom fabrication of drapery, bedding, and custom items. Decades of delivering solutions for hundreds of hospitality environments, healthcare facilities, and restaurants have made Hunter Douglas a key source for designers and purchasers alike. Our worldwide presence gives our partners access to an unmatched combination of expertise and resources.

## **COMMITMENT TO SUSTAINABILITY**

From products, to processes, to philanthropy, environmental responsibility is a core Hunter Douglas value. We are the worldwide leader in creating innovative, energy-efficient window fashions. Our commitment to minimizing our own impact on the environment includes aggressive plans to reduce energy consumption by 15%, water usage by 40%, and overall carbon emissions by 20% over a three-year period.

## **FOR MORE INFORMATION**

- 800.229.5300
- [www.HunterDouglasHospitality.com](http://www.HunterDouglasHospitality.com)

# HunterDouglasHospitality

---



**YOUR COMPLETE  
ROOM SOURCE:**

**DRAPERIES &  
WINDOW COVERINGS**

**BEDDING, FABRICS  
& UPHOLSTERY**

**FABRICATION &  
INSTALLATION  
SERVICES**

Hunter Douglas Hospitality  
Las Vegas • Chicago  
800.229.5300  
[www.HunterDouglasHospitality.com](http://www.HunterDouglasHospitality.com)

©2011 Hunter Douglas Inc. ® is a trademark of Hunter Douglas Inc.

